

Ecoregion 3 – Alaska Range

Area of ecoregion km ² (mi ²)	Area of planning region km ² (mi ²)	Minimum Dynamic Reserve km ² (mi ²)	Number of protected area benchmarks	Number of new system-level benchmarks	Number of candidate benchmark networks (groups)
103,339 (39,899)	282,288 (108,992)	1,849 (714)	2	782	139 (20)

The identification of candidate benchmark networks is a three-step process. First, potential benchmarks are identified based on size, intactness, and hydrologic connectivity. Next, benchmarks are assembled into candidate networks that are representative of the planning region, where the number of benchmarks required to achieve representation may vary amongst planning regions (*e.g.*, ecoregions). Finally, if multiple benchmark network options exist, to assist with the selection process, the networks are ranked using additional criteria such as fundamental benchmark properties, climate change, and focal species, as done below.

Benchmark potential of existing protected areas and regions that support the construction of benchmark networks

The planning region for ecoregion 3 is defined by the ecoregion and intersecting hydrologic units (HUC8). Prior to identifying new benchmarks, existing protected areas (PAs) were clipped to the planning region and evaluated for their potential to serve as system- and subsystem-level benchmarks for the ecoregion (Figure 1). System-level benchmarks are assemblages of intact catchments that are of sufficient size to capture large-scale processes and maintain habitats vulnerable to natural disturbance (*i.e.*, Minimum Dynamic Reserve or MDR). There are two levels of benchmark intactness, I and II, which denote a minimum catchment intactness of 100% and 80%, respectively. Subsystem-level benchmarks do not meet the size and/or intactness criteria for system-level benchmarks. For this study, subsystem benchmarks are no less than 80% MDR in size. Four potential PA system-level II benchmark was identified in ecoregion 3 (Figure 1; Table 1). However, only two had sufficient overlap with the ecoregion ($\geq 80\%$ MDR) to be included as explicit benchmarks in the design of benchmark networks (PA_1 and PA_3). While these PA benchmarks are sufficient to achieve environmental representation, we identified new benchmarks to provide land managers with additional options. Ecoregion 3 has high benchmark potential with benchmarks identified over 94% of the ecoregion (Figure 1), which includes areas with existing protection.

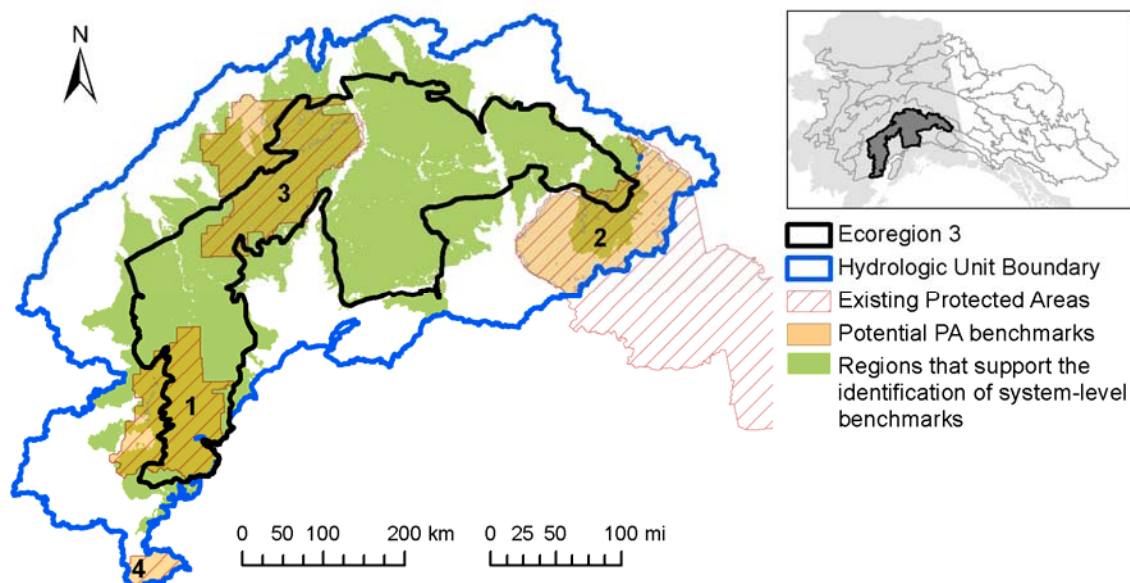


Figure 1: The planning region for ecoregion 3 is defined by the ecoregion (black outline) buffered by HUC8s (blue outline). Potential protected area (PA) system-level II benchmarks are shown in orange; labels correspond to the PA ID in Table 1. Regions that support the identification of new system-level benchmarks ($\geq 80\%$ catchment-intactness) are shown in green.

Table 1: Characteristics of the four system-level II protected area (PA) benchmarks evaluated in Ecoregion 3 (Figure 1). To be included in the design of benchmark networks, the ecoregion portion of the PA benchmark must be > 80% MDR in size.

PA ID	Area km ² (mi ²)	Benchmark Type	% MDR area intersecting ecoregion
PA_1	16,261 (6,278)	System-level II	572 (5.7 x MDR)
PA_2	19,756 (7,628)	System-level II	61
PA_3	23,883 (9,221)	System-level II	831 (8.3 x MDR)
PA_4	2,261 (873)	System-level II	0

Identification of candidate benchmark networks

Candidate benchmark networks for the planning region were identified based on the representation of four indicators of environmental variation: Climate Moisture Index (CMI), Gross Primary Productivity (GPP), Lake-Edge Density (LED), and Land Cover. Representation was assessed using MDR-based representation targets for indicator classes. Representation targets were derived for each class by multiplying the MDR for the ecoregion by the proportion of the class in the ecoregion. For example, if the class makes up 10% of the ecoregion, the target would be 0.1 x MDR. For a representation target to be achieved, it must be fully met within a single benchmark, except when benchmarks overlap. For ecoregion 3, we identified three PA system-level benchmark networks that achieve all MDR-based representation targets. Networks were also identified from new benchmarks only. Networks designed from two new system-level benchmarks achieve all representation targets. In total, 139 candidate benchmark networks were identified, and assigned to 20 spatial groups (Figure 2a-b). Networks N1 to N3 include PA benchmarks. For reporting, the set of candidate benchmark networks was reduced to the top network from each spatial group (N1-N20; Figure 2a-b, Table 2). The top networks were selected using the same criteria and methods as described below for ranking candidate benchmark networks. For a full description of the methods, see the [main report](#).

Table 2: Area and representation characteristics of the top network selected from each of the 20 spatial groups in Figure 2. The networks differ in area due to variable overlap of benchmarks within networks. All networks achieved MDR-based representation targets for CMI, LED, GPP, and land cover, but representation varied amongst networks when evaluated using Kolmogorov-Smirnov (KS; continuous indicators CMI, LED, and GPP) and Bray-Curtis (BC; categorical indicator land cover) dissimilarity metrics (DMs). DMs range from 0 to 1, with values closer to 0 indicating better representation.

Network ID	Area km ² (mi ²)	Upstream area km ² (mi ²)	KS & BC Dissimilarity Metrics				
			CMI	GPP	LED	Land Cover	Mean Dissimilarity
N1	16,261 (6,278)	4,201 (1,622)	0.266	0.187	0.060	0.136	0.162
N2	23,883 (9,221)	3,160 (1,220)	0.229	0.278	0.107	0.143	0.189
N3	40,144 (15,500)	7,360 (2,842)	0.117	0.242	0.077	0.134	0.143
N4	3,387 (1,308)	788 (304)	0.157	0.083	0.078	0.163	0.120
N5	3,702 (1,429)	2,217 (856)	0.330	0.089	0.041	0.061	0.130
N6	3,700 (1,429)	738 (285)	0.237	0.070	0.073	0.134	0.128
N7	3,699 (1,428)	15,938 (6,154)	0.156	0.028	0.065	0.092	0.085
N8	3,674 (1,419)	93 (36)	0.203	0.147	0.134	0.071	0.139
N9	3,727 (1,439)	646 (249)	0.123	0.088	0.048	0.071	0.082
N10	3,705 (1,430)	961 (371)	0.119	0.048	0.087	0.074	0.082
N11	3,702 (1,430)	3,241 (1,251)	0.092	0.081	0.058	0.081	0.078
N12	3,706 (1,431)	13,070 (5,046)	0.141	0.046	0.055	0.047	0.072
N13	3,702 (1,429)	2,116 (817)	0.094	0.073	0.158	0.123	0.112
N14	3,700 (1,429)	298 (115)	0.226	0.155	0.084	0.095	0.090
N15	3,702 (1,429)	770 (297)	0.103	0.073	0.052	0.120	0.087
N16	3,706 (1,431)	1,102 (425)	0.157	0.043	0.044	0.039	0.071
N17	3,700 (1,428)	63 (24)	0.091	0.132	0.052	0.085	0.140
N18	3,702 (1,429)	11,129 (4,297)	0.094	0.031	0.098	0.083	0.076
N19	3,705 (1,431)	298 (115)	0.093	0.049	0.091	0.109	0.085
N20	3,689 (1,424)	9,663 (3,731)	0.198	0.104	0.174	0.165	0.160

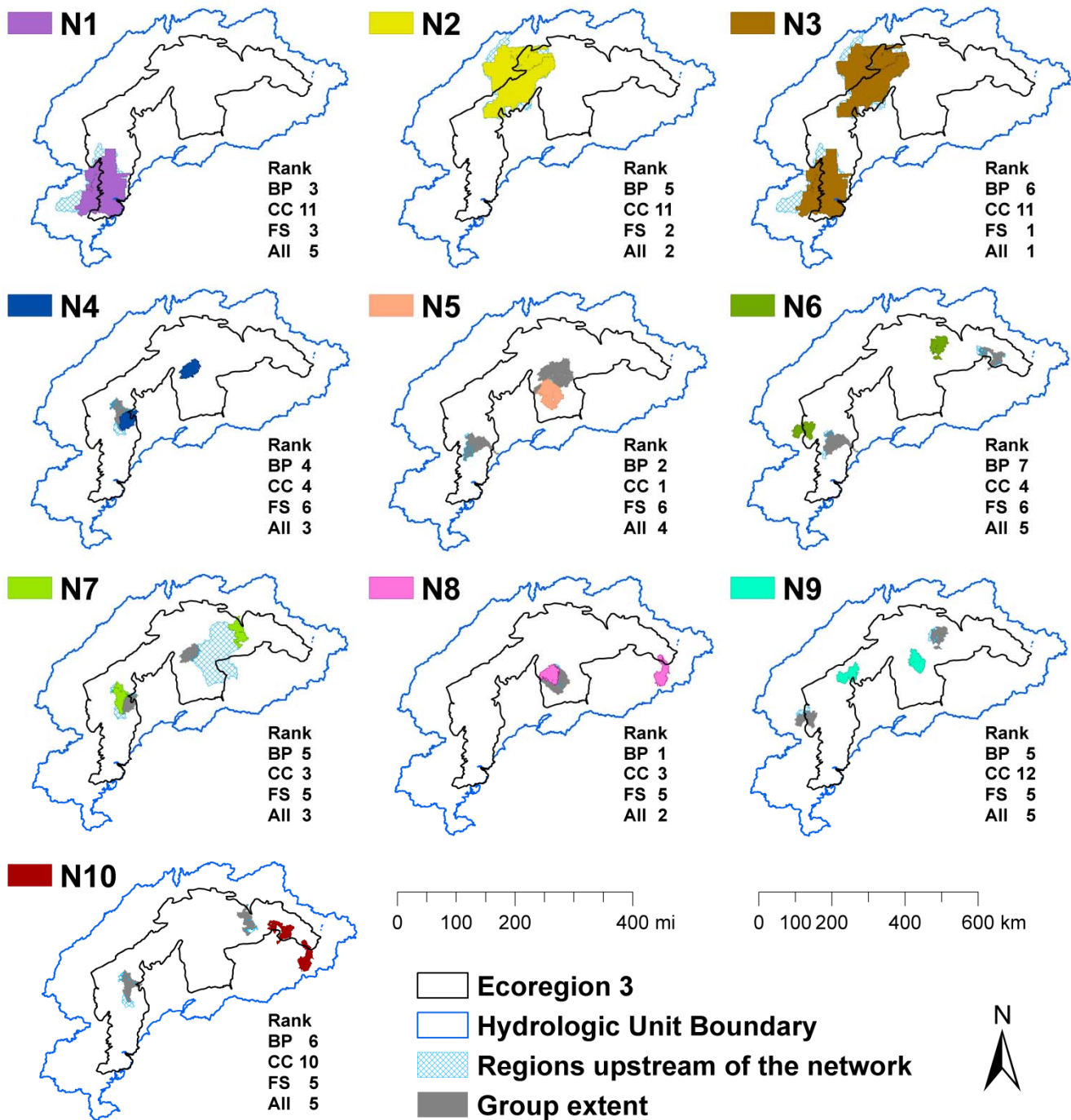


Figure 2a: Benchmark networks for ecoregion 3 (N=139) were assigned to 20 spatial groups. The top network selected from each group is shown in color. N1-3 are networks comprised of protected area system-level II benchmarks. N4-10 are benchmark networks comprised of two new system-level benchmarks, which are overlapping in N4 and N8. Catchments upstream of networks are shown in blue cross-hatching. The group extent (grey) is the area covered by all networks in the group. Ranks based on fundamental benchmark properties (BP), resilience to climate change (CC), amount of focal species habitat (FS), and overall rank (ALL) are reported (Tables 3-6).

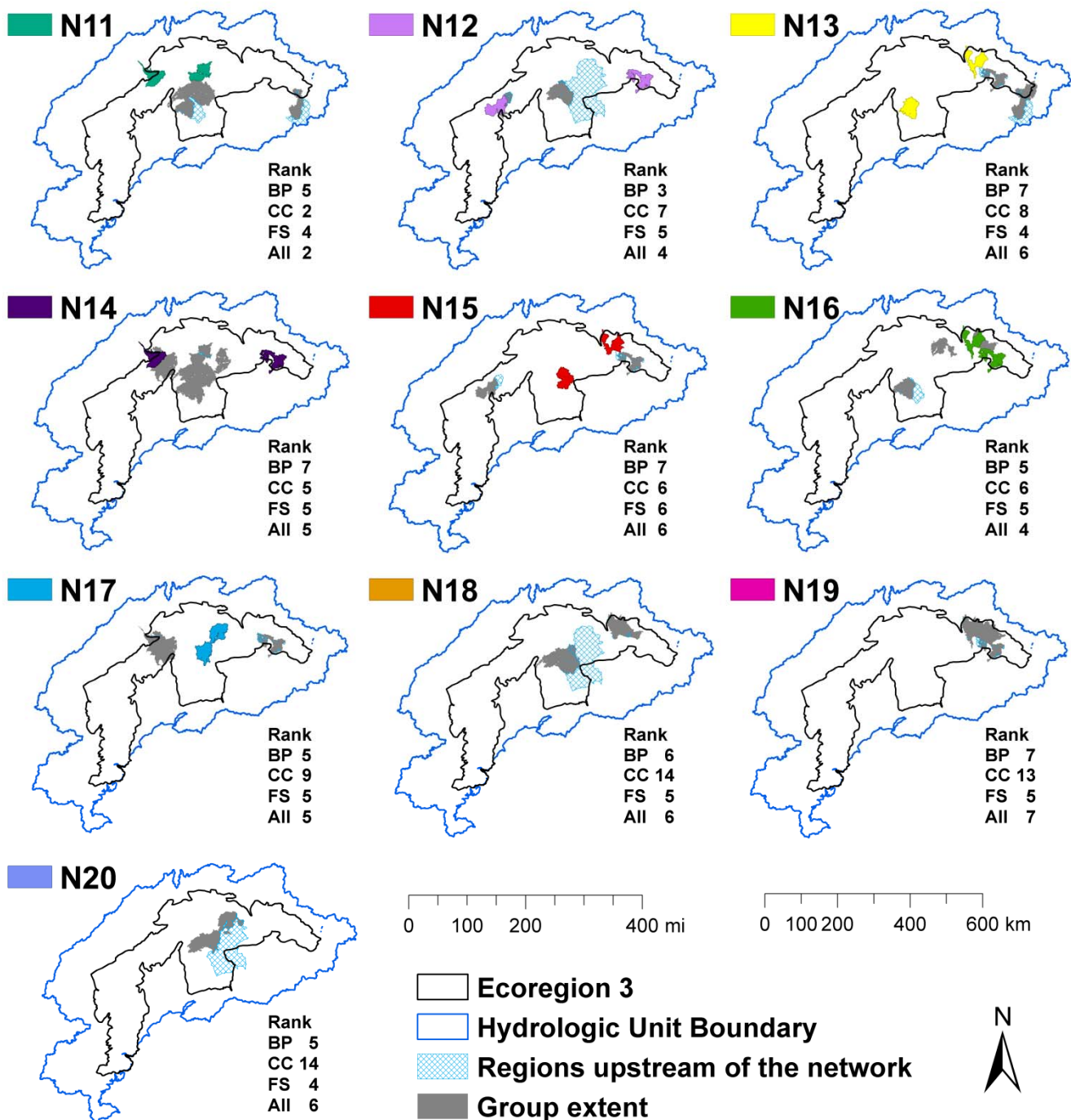


Figure 2b: Benchmark networks for ecoregion 3 (N=139) were assigned to 20 spatial groups. The top network selected from each group is shown in color. N11-20 are benchmark networks comprised of two new system-level benchmarks. Catchments upstream of networks are shown in blue cross-hatching. The group extent (grey) is the area covered by all networks in the group. Ranks based on fundamental benchmark properties (BP), resilience to climate change (CC), amount of focal species habitat (FS), and overall rank (ALL) are reported (Tables 3-6).

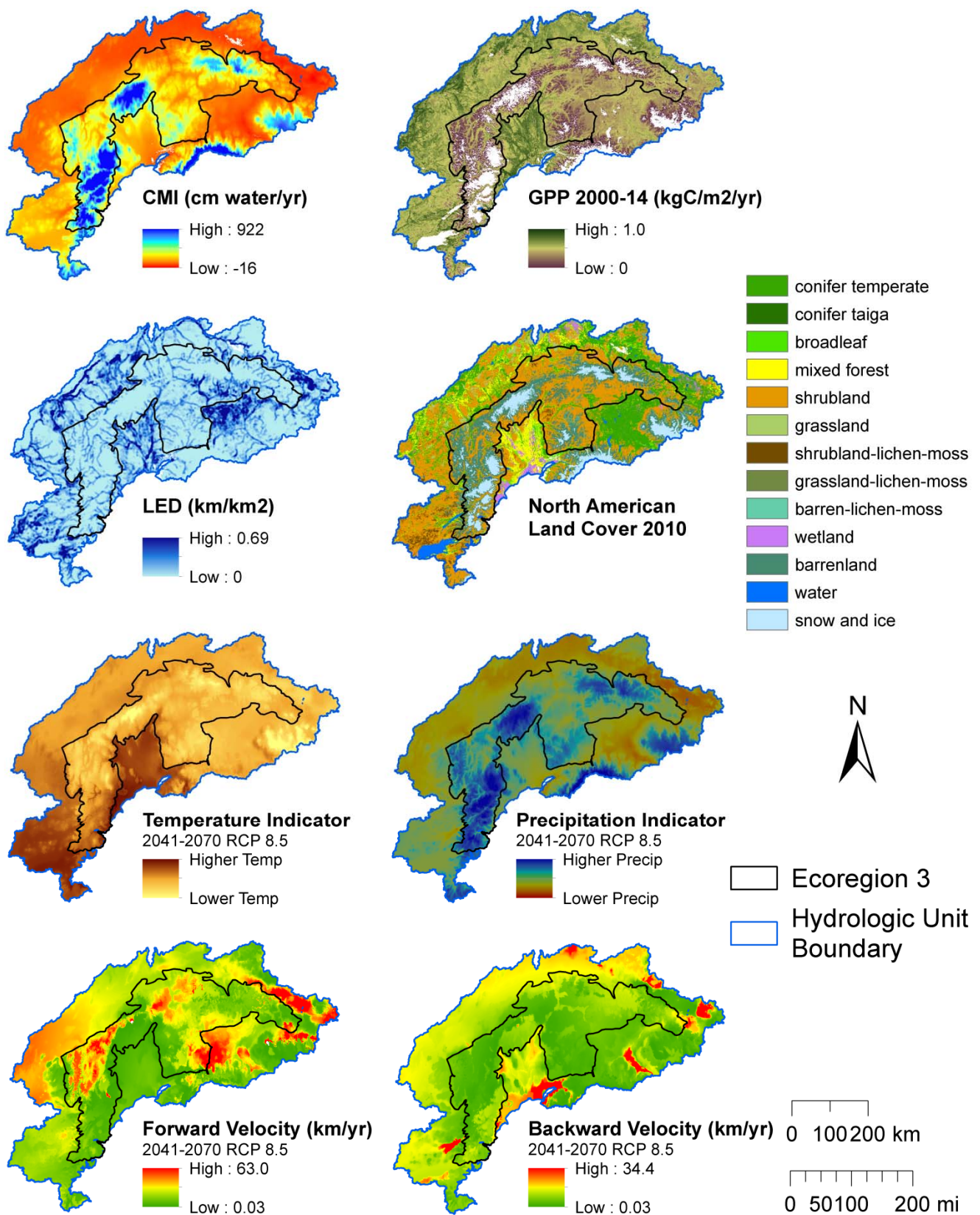


Figure 3: Distribution of the four indicators of environmental variation and four climate change datasets in the ecoregion, which include Climate Moisture Index (CMI, [Wang et al. 2016](#)), Gross Primary Productivity 2000-14 (GPP, [BEACONS 2015](#)), Lake-Edge Density (LED, [BEACONS 2015](#)), and North American Land Cover 2010 ([CEC 2013](#)), and the climate-projected datasets: Temperature and Precipitation Indicators, and Forward and Backward Velocity ([AdaptWest Project 2015](#)).

Benchmark network ranking

Candidate benchmark networks were ranked using three sets of criteria: fundamental benchmark properties (Table 3), resilience to climate change (Table 4), and the amount of focal species habitat (Table 5). Ranks were determined using weighted-rank methods as described in the [main report](#). The ranks across the three sets of criteria were combined to provide an overall rank (Table 6). The results for all benchmark networks (N=139) are available at www.beaconsproject.ca/nwb.

Fundamental Benchmark Properties

In addition to being large and intact, benchmarks are designed to have high internal hydrologic connectivity (*e.g.*, DCI), minimal vulnerability to external and internal disturbances (*e.g.*, Upstream Area), and a compact shape (*e.g.*, Shape Index), and selected to be representative of environmental variation. The 20 candidate networks vary with regards to these properties. While all benchmark networks satisfy MDR-based representation targets, representation varies widely when measured using dissimilarity metrics (DMs). Mean Dissimilarity ranges from 0.071 to 0.189, with higher values indicating greater dissimilarity and poorer representation (Tables 2 & 3). Thirteen of the 20 networks have moderate to high representation with DM < 0.2 across the four indicators of environmental variation (Table 2). Networks also differ widely in the amount of upstream area (93 – 15,938 km²), although in all cases (except N17), the upstream area is largely intact (85-100%; Table 3). Networks are similar with regards to internal vulnerability and shape, but differ with regards to internal hydrologic connectivity with minimum lwDCI ranging from 0.066 to 0.532 (Table 3), with values closer to 1 indicating greater connectivity. The networks with overlapping benchmarks were treated as a single benchmark when calculating Shape and lwDCI.

Table 3: Benchmark networks were ranked using a suite of benchmark properties. **Mean Dissimilarity** is the mean dissimilarity metric for the four indicators of environmental variation, and ranges from 0 to 1, with values closer to 0 indicating better representation, and ranking higher. **Upstream Area** is a measure of vulnerability to external influences via the stream network; lower values rank higher. **Upstream AWI** is the mean area-weighted intactness of catchments upstream of the network; higher values rank higher. **Internal Vulnerability** is the proportion of low (<80%) intact areas within the network; lower values rank higher. **Maximum Shape** is the shape index for the benchmark in the network that most deviates from a circle (shape index = 1); lower values rank higher. **Minimum lwDCI** is the mean length-weighted Dendritic Connectivity Index (0-1; low to high connectivity) for the benchmark with the lowest internal hydrologic connectivity in the network; higher values rank higher. **Benchmark Properties Rank** is based on the network-level mean weighted rank across all properties, which is shown in (). The highest ranked network within each individual benchmark property is highlighted in grey. All metrics are described in the [main report](#). **Overlapping benchmarks were treated as a single benchmark when calculating Shape and lwDCI.**

Network ID	Mean Dissimilarity	Upstream Area km ² (mi ²)	Upstream AWI (%)	Internal Vulnerability	Maximum Shape	Minimum lwDCI	Benchmark Properties Rank
N1	0.162	4,201 (1,622)	99	0.003	2.7	0.532	3 (0.052)
N2	0.189	3,160 (1,220)	95	0.011	2.9	0.299	5 (0.050)
N3	0.143	7,360 (2,842)	98	0.008	2.9	0.299	6 (0.049)
N4	0.120	788 (304)	97	0.008	2.8	0.364	4 (0.051)
N5	0.130	2,217 (856)	100	0.004	2.4	0.346	2 (0.053)
N6	0.128	738 (285)	95	0.018	3.9	0.066	7 (0.046)
N7	0.085	15,938 (6,154)	98	0.004	2.3	0.224	5 (0.050)
N8	0.139	93 (36)	97	0.013	2.2	0.502	1 (0.055)
N9	0.082	646 (249)	98	0.012	2.9	0.220	5 (0.050)
N10	0.082	961 (371)	87	0.014	3.2	0.218	6 (0.049)
N11	0.078	3,241 (1,251)	99	0.009	3.1	0.346	5 (0.050)
N12	0.072	13,070 (5,046)	98	0.002	2.1	0.225	3 (0.052)
N13	0.112	2,116 (817)	97	0.023	3.9	0.066	7 (0.046)
N14	0.090	298 (115)	85	0.017	3.9	0.066	7 (0.046)
N15	0.087	770 (297)	95	0.017	3.9	0.066	7 (0.046)
N16	0.071	1,102 (425)	99	0.002	3.1	0.376	5 (0.050)
N17	0.140	63 (24)	65	0.004	2.6	0.160	5 (0.050)
N18	0.076	11,129 (4,297)	98	0.002	2.8	0.319	6 (0.049)
N19	0.085	298 (115)	86	0.017	3.9	0.066	7 (0.046)
N20	0.160	9,663 (3,731)	98	0.013	2.4	0.221	5 (0.050)

Climate Change Resilience

Changes in patterns of environmental variation are expected under climate change. To address this, we ranked benchmark networks based on their ability to maintain representation, as measured by dissimilarity metrics (DM), using climate-projected multivariate indicators of climatic conditions (2041-2070, RCP 8.5)¹, which we refer to as Temperature and Precipitation Indicators given the explanatory power of temperature and precipitation variables in each indicator, respectively. Eight of the 20 networks maintain representation with moderate values for both indicators (DM < 0.2; Table 4). With the exception of N1, N2, and N5, the remaining networks have one indicator with moderate to good representation. To address the vulnerability of benchmark networks and their support of biodiversity under climate change, we evaluated the ability of species to persist

¹ All climate-projected datasets used to rank networks were for the period 2041-2070 and were created using RCP 8.5, the Representative Concentration Pathway with the highest greenhouse gas emissions from [IPCC \(2014\)](#). Additional rankings based on 2011-2040 and 2071-2100 and RCP 4.5 are available at www.beaconsproject.ca/nwb.

within and colonize benchmark networks, using forward and backward climate velocity (2041-2070, RCP 8.5)¹, respectively. Higher velocities indicate greater vulnerability to species loss. Across networks, mean forward and backward velocities range from 0.8 to 2.9 km/yr and 0.6 to 2.5 km/yr, respectively (Table 4). Lower forward velocities indicate higher refugia potential for species, whereas lower backward velocities indicate higher colonization potential. In most networks, the forward and backward velocities are similar with backward velocity slightly lower (except N6, N16, and N19). Six networks have mean velocities lower than the ecoregion-level means for both forward (2.1 km/yr) and backward (1.3 km/yr) velocities, suggesting that these networks favour areas of both refugia and colonization potential. The relatively low velocities of this ecoregion are likely due to its rugged terrain. The output is available such that users have the flexibility to select a subset of climate datasets to rank networks.

Table 4: Benchmark networks were ranked based on their capacity to represent future climatic conditions (temperature and precipitation indicators) and vulnerability to changing climatic conditions (forward and backward velocity). **Temperature and Precipitation Indicators** were assessed using the Kolmogorov-Smirnov (KS) dissimilarity metric, which ranges from 0 to 1; lower values indicate better representation, and rank higher. **Climate Velocities** are calculated as the geometric mean across all benchmarks from each network; lower values rank higher. **Climate Change Rank** is a network-level mean weighted rank across the four climatic measures. Values in () are weighted ranks. The highest ranked network within each indicator/velocity is highlighted in grey. For dataset details, see the [main report](#).

Network ID	KS Dissimilarity Metrics		Mean Forward Climate Velocity km/yr (mi/yr)	Mean Backward Climate Velocity km/yr (mi/yr)	Climate Change Rank
	Temperature Indicator	Precipitation Indicator			
N1	0.605	0.232	1.7 (1.1)	1.7 (1.1)	11 (0.045)
N2	0.222	0.233	2.2 (1.3)	1.8 (1.1)	11 (0.045)
N3	0.351	0.136	2.0 (1.2)	1.8 (1.1)	11 (0.045)
N4	0.091	0.121	1.9 (1.2)	0.6 (0.4)	4 (0.055)
N5	0.352	0.262	0.8 (0.5)	0.8 (0.5)	1 (0.060)
N6	0.115	0.192	1.1 (0.7)	1.4 (0.9)	4 (0.055)
N7	0.147	0.124	1.7 (1.0)	0.7 (0.4)	3 (0.056)
N8	0.128	0.193	1.6 (1.0)	0.7 (0.4)	3 (0.056)
N9	0.151	0.103	2.2 (1.4)	2.0 (1.2)	12 (0.044)
N10	0.204	0.092	2.7 (1.7)	1.2 (0.8)	10 (0.046)
N11	0.196	0.081	1.3 (0.8)	0.8 (0.5)	2 (0.057)
N12	0.172	0.142	2.4 (1.5)	0.9 (0.6)	7 (0.050)
N13	0.503	0.075	1.8 (1.1)	1.3 (0.8)	8 (0.049)
N14	0.201	0.086	1.5 (0.9)	1.4 (0.9)	5 (0.052)
N15	0.270	0.115	1.8 (1.1)	1.1 (0.7)	6 (0.051)
N16	0.132	0.133	1.4 (0.9)	1.6 (1.0)	6 (0.051)
N17	0.123	0.248	2.2 (1.4)	1.3 (0.8)	9 (0.048)
N18	0.316	0.059	2.7 (1.7)	2.1 (1.3)	14 (0.041)
N19	0.392	0.111	1.8 (1.1)	2.5 (1.6)	13 (0.043)
N20	0.275	0.139	2.9 (1.8)	1.8 (1.1)	14 (0.041)

Focal Species

An extensive review of management plans for the NWBLCC did not reveal specific conservation targets for focal species (see [focal species report](#)). As such, the objective for all focal species was to maximize the protection of current and future habitat when ranking benchmark networks. For some species, there are multiple datasets (N=2-15). When multiple datasets were used, the network rank for the species (or guild) is a mean of the weighted ranks generated for each dataset. Species ranks are variable within each network (Table 5a). The high ranks of the protected area benchmark networks N1-3 is likely due to their size, which is 3 to 10 times that of the other networks. The output is available such that users have the flexibility to select a subset of species datasets to rank networks.

Table 5a: Benchmark networks were ranked based on the amount of focal species habitat they capture. Data were not available for Broad Whitefish. Values in () are weighted ranks. When multiple datasets were used for a species (e.g., Caribou N=5), networks were ranked using the mean of weighted ranks from across datasets. The highest ranked network within each individual species is highlighted in grey. **Focal Species Rank** is based on the network-level mean weighted rank across all species. For further details on the datasets and methods, see [main and focal species reports](#). Additional information on each focal species and datasets is available at www.beaconsproject.ca/nwb.

Network ID	Rank (mean weighted rank)									Focal Species Rank
	Beaver (N=1)	Caribou (N=5)	Chinook Salmon (N=3)	Chum Salmon (N=3)	Dall Sheep (N=2)	Moose (N=2)	Old-Forest Birds (N=15) ¹	Rusty Blackbird (N=3)	Waterfowl (N=3) ²	
N1	3 (0.052)	3 (0.049)	3 (0.053)	3 (0.053)	2 (0.058)	3 (0.056)	8 (0.046)	9 (0.046)	3 (0.057)	3 (0.052)
N2	2 (0.066)	2 (0.066)	2 (0.062)	2 (0.067)	4 (0.056)	2 (0.061)	3 (0.051)	1 (0.059)	2 (0.060)	2 (0.060)
N3	1 (0.076)	1 (0.073)	1 (0.073)	1 (0.076)	1 (0.072)	1 (0.076)	1 (0.055)	2 (0.058)	1 (0.076)	1 (0.070)
N4	6 (0.046)	8 (0.044)	4 (0.050)	5 (0.047)	10 (0.044)	6 (0.046)	8 (0.046)	5 (0.050)	5 (0.047)	6 (0.046)
N5	5 (0.047)	7 (0.046)	5 (0.049)	4 (0.048)	9 (0.045)	5 (0.047)	7 (0.047)	9 (0.046)	6 (0.046)	6 (0.046)
N6	5 (0.047)	7 (0.046)	6 (0.046)	6 (0.046)	9 (0.045)	5 (0.047)	6 (0.048)	8 (0.047)	5 (0.047)	6 (0.046)
N7	5 (0.047)	6 (0.047)	4 (0.050)	5 (0.047)	7 (0.047)	5 (0.047)	5 (0.049)	8 (0.047)	5 (0.047)	5 (0.047)
N8	6 (0.046)	6 (0.047)	5 (0.049)	5 (0.047)	5 (0.049)	5 (0.047)	4 (0.050)	10 (0.044)	6 (0.046)	5 (0.047)
N9	5 (0.047)	6 (0.047)	6 (0.046)	4 (0.048)	9 (0.045)	5 (0.047)	6 (0.048)	5 (0.050)	4 (0.048)	5 (0.047)
N10	5 (0.047)	7 (0.046)	5 (0.049)	6 (0.046)	10 (0.044)	5 (0.047)	5 (0.049)	5 (0.050)	5 (0.047)	5 (0.047)
N11	6 (0.046)	4 (0.049)	5 (0.049)	4 (0.048)	5 (0.049)	5 (0.047)	5 (0.049)	4 (0.053)	5 (0.047)	4 (0.048)
N12	5 (0.047)	6 (0.047)	6 (0.046)	6 (0.046)	6 (0.048)	5 (0.047)	5 (0.049)	9 (0.046)	5 (0.047)	5 (0.047)
N13	6 (0.046)	4 (0.049)	6 (0.046)	6 (0.046)	5 (0.049)	6 (0.046)	4 (0.050)	3 (0.055)	4 (0.048)	4 (0.048)
N14	4 (0.048)	4 (0.049)	8 (0.044)	6 (0.046)	7 (0.047)	5 (0.047)	3 (0.051)	6 (0.049)	4 (0.048)	5 (0.047)
N15	6 (0.046)	7 (0.046)	6 (0.046)	6 (0.046)	9 (0.045)	5 (0.047)	5 (0.049)	8 (0.047)	5 (0.047)	6 (0.046)
N16	6 (0.046)	6 (0.047)	5 (0.049)	5 (0.047)	6 (0.048)	5 (0.047)	5 (0.049)	7 (0.048)	6 (0.046)	5 (0.047)
N17	5 (0.047)	5 (0.048)	6 (0.046)	6 (0.046)	8 (0.046)	6 (0.046)	4 (0.050)	7 (0.048)	5 (0.047)	5 (0.047)
N18	5 (0.047)	5 (0.048)	6 (0.046)	6 (0.046)	5 (0.049)	5 (0.047)	4 (0.050)	6 (0.049)	6 (0.046)	5 (0.047)
N19	5 (0.047)	6 (0.047)	6 (0.046)	6 (0.046)	7 (0.047)	6 (0.046)	4 (0.050)	5 (0.050)	5 (0.047)	5 (0.047)
N20	5 (0.047)	4 (0.049)	7 (0.045)	6 (0.046)	3 (0.057)	4 (0.048)	2 (0.052)	7 (0.048)	5 (0.047)	4 (0.048)

¹ Guild composed of Boreal Chickadee, Brown Creeper, Pine Grosbeak, Swainson's Thrush, and White-Winged Crossbill. In this case, the weighted rank shown in parenthesis is the mean across 15 datasets (3 per species).

² Guild composed of Lesser Scaup (1 dataset), White-Winged Scoter (1 dataset), and Trumpeter Swan (1 dataset). The weighted rank shown in parenthesis is the mean across all species.

To remove the influence of the large networks N1-N3 on the weighted rank values, the ranking process with focal species was repeated with N1-N3 excluded (Table 5b). The relative ranks of networks N4-N20 may differ from Table 5a, as differences masked by the large networks N1-N3 are revealed.

Table 5b. Benchmark networks designed from **new system-level benchmarks only** were ranked based on the amount of focal species habitat they capture. Values in () are weighted ranks. When multiple datasets were used for a species (*e.g.*, Caribou N=5), networks were ranked using the mean of weighted ranks from across datasets. The highest ranked network within each individual species is highlighted in grey. **Focal Species Rank** is based on the network-level mean weighted rank across all species. For further details on the datasets and methods see [main and focal species reports](#). Additional information on each focal species and datasets is available at www.beaconsproject.ca/nwb.

Network ID	Rank (mean weighted rank)									Focal Species Rank
	Beaver (N=1)	Caribou (N=5)	Chinook Salmon (N=3)	Chum Salmon (N=3)	Dall Sheep (N=2)	Moose (N=2)	Old-Forest Birds (N=15) ¹	Rusty Blackbird (N=3)	Waterfowl (N=3) ²	
N4	10 (0.052)	12 (0.046)	1 (0.070)	4 (0.066)	13 (0.050)	8 (0.053)	9 (0.054)	7 (0.057)	6 (0.059)	7 (0.056)
N5	9 (0.054)	11 (0.049)	4 (0.066)	2 (0.072)	12 (0.051)	3 (0.062)	8 (0.056)	9 (0.054)	7 (0.057)	6 (0.057)
N6	9 (0.054)	10 (0.054)	8 (0.052)	6 (0.051)	11 (0.053)	7 (0.055)	8 (0.056)	8 (0.055)	3 (0.065)	8 (0.055)
N7	7 (0.059)	8 (0.056)	3 (0.067)	3 (0.067)	11 (0.053)	6 (0.059)	4 (0.060)	10 (0.053)	8 (0.056)	5 (0.058)
N8	12 (0.048)	10 (0.054)	2 (0.068)	4 (0.066)	6 (0.061)	5 (0.060)	4 (0.060)	11 (0.052)	11 (0.046)	6 (0.057)
N9	4 (0.065)	6 (0.059)	6 (0.055)	1 (0.074)	9 (0.057)	4 (0.061)	6 (0.058)	7 (0.057)	4 (0.061)	3 (0.060)
N10	8 (0.058)	10 (0.054)	5 (0.065)	6 (0.051)	12 (0.051)	6 (0.059)	7 (0.057)	6 (0.059)	6 (0.059)	6 (0.057)
N11	11 (0.051)	5 (0.061)	4 (0.066)	2 (0.072)	3 (0.065)	7 (0.055)	6 (0.058)	2 (0.069)	9 (0.054)	2 (0.061)
N12	6 (0.061)	7 (0.057)	7 (0.053)	6 (0.051)	8 (0.058)	4 (0.061)	5 (0.059)	10 (0.053)	7 (0.057)	7 (0.056)
N13	10 (0.052)	3 (0.067)	8 (0.052)	6 (0.051)	2 (0.068)	9 (0.049)	7 (0.057)	1 (0.070)	2 (0.066)	4 (0.059)
N14	1 (0.079)	1 (0.069)	10 (0.048)	6 (0.051)	4 (0.063)	3 (0.062)	1 (0.064)	3 (0.062)	1 (0.067)	1 (0.062)
N15	10 (0.052)	9 (0.055)	8 (0.052)	6 (0.051)	10 (0.054)	8 (0.053)	8 (0.056)	8 (0.055)	5 (0.060)	9 (0.054)
N16	10 (0.052)	9 (0.055)	5 (0.065)	5 (0.065)	8 (0.058)	6 (0.059)	6 (0.058)	6 (0.059)	10 (0.049)	6 (0.057)
N17	5 (0.064)	4 (0.065)	8 (0.052)	6 (0.051)	5 (0.062)	8 (0.053)	3 (0.061)	7 (0.057)	4 (0.061)	5 (0.058)
N18	3 (0.066)	4 (0.065)	6 (0.055)	6 (0.051)	7 (0.059)	2 (0.066)	6 (0.058)	4 (0.061)	9 (0.054)	4 (0.059)
N19	9 (0.054)	6 (0.059)	8 (0.052)	6 (0.051)	7 (0.059)	8 (0.053)	8 (0.056)	5 (0.060)	6 (0.059)	8 (0.055)
N20	2 (0.071)	2 (0.068)	9 (0.051)	6 (0.051)	1 (0.070)	1 (0.072)	2 (0.063)	6 (0.059)	4 (0.061)	1 (0.062)

¹ Guild composed of Boreal Chickadee, Brown Creeper, Pine Grosbeak, Swainson's Thrush, and White-Winged Crossbill. In this case, the weighted rank shown in parenthesis is the mean across 15 datasets (3 per species).

² Guild composed of Lesser Scaup (1 dataset), White-Winged Scoter (1 dataset), and Trumpeter Swan (1 dataset). The weighted rank shown in parenthesis is the mean across all species.

Overall Rank

Candidate benchmark networks were assigned an overall rank based on fundamental benchmark properties (Table 3), resilience to climate change (Table 4) and the amount of focal species habitat (Table 5a). Attributes were given equal weighting. However, users may wish to prioritize some attributes over others. The results are available in a format that gives users the flexibility to modify and re-rank networks. Additional attributes can also be considered. For example, if the conservation priority is the protection of focal species habitat within the ecoregion, networks with greater overlap with the ecoregion are more likely to achieve this objective. Greater overlap with protected areas may facilitate implementation, given existing protection. Overlap with the ecoregion and existing protected areas ranges from 53-100% and 0-100% across benchmark networks, respectively (Table 6). While benchmark networks that most overlap with the ecoregion may best reflect the environmental variation of the ecoregion, networks that extend beyond the ecoregion boundary may contribute to the benchmark networks of neighbouring ecoregions, leading to greater efficiency in the design of a protected areas network for the NWBLCC planning region.

Table 6: Overall Rank is a network-level mean weighted rank for fundamental benchmark properties (Table 3), climate change (Table 4) and focal species (Table 5a). Values in () are weighted ranks. **Overlap with ecoregion** and **Overlap with existing PAs** with high levels of protection may be used as additional ranking criteria.

Network ID	Overlap with Ecoregion	Overlap with Existing PAs	Mean Dissimilarity	Benchmark Properties Rank	Climate Change Rank	Focal Species Rank ¹	Overall Rank
N1	65.0%	100.0%	0.162	3 (0.052)	11 (0.045)	3 (0.052)	5 (0.048)
N2	64.3%	100.0%	0.189	5 (0.050)	11 (0.045)	2 (0.060)	2 (0.051)
N3	64.7%	100.0%	0.143	6 (0.049)	11 (0.045)	1 (0.070)	1 (0.055)
N4	90.8%	0.1%	0.120	4 (0.051)	4 (0.055)	6 (0.046)	3 (0.050)
N5	99.7%	21.7%	0.130	2 (0.053)	1 (0.060)	6 (0.046)	4 (0.049)
N6	96.2%	31.1%	0.128	7 (0.046)	4 (0.055)	6 (0.046)	5 (0.048)
N7	91.6%	0.0%	0.085	5 (0.050)	3 (0.056)	5 (0.047)	3 (0.050)
N8	100.0%	0.0%	0.139	1 (0.055)	3 (0.056)	5 (0.047)	2 (0.051)
N9	78.8%	0.0%	0.082	5 (0.050)	12 (0.044)	5 (0.047)	5 (0.048)
N10	98.7%	0.1%	0.082	6 (0.049)	10 (0.046)	5 (0.047)	5 (0.048)
N11	57.2%	50.1%	0.078	5 (0.050)	2 (0.057)	4 (0.048)	2 (0.051)
N12	98.1%	48.5%	0.072	3 (0.052)	7 (0.050)	5 (0.047)	4 (0.049)
N13	53.7%	53.9%	0.112	7 (0.046)	8 (0.049)	4 (0.048)	6 (0.047)
N14	84.2%	50.0%	0.090	7 (0.046)	5 (0.052)	5 (0.047)	5 (0.048)
N15	94.3%	48.6%	0.087	7 (0.046)	6 (0.051)	6 (0.046)	6 (0.047)
N16	98.5%	0.0%	0.071	5 (0.050)	6 (0.051)	5 (0.047)	4 (0.049)
N17	80.3%	50.0%	0.140	5 (0.050)	9 (0.048)	5 (0.047)	5 (0.048)
N18	98.5%	0.0%	0.076	6 (0.049)	14 (0.041)	5 (0.047)	6 (0.047)
N19	94.7%	0.0%	0.085	7 (0.046)	13 (0.043)	5 (0.047)	7 (0.046)
N20	100.0%	0.0%	0.160	5 (0.050)	14 (0.041)	4 (0.048)	6 (0.047)

¹ Focal Species Rank is from Table 5a.