

Ecoregion 29 – Yukon River Lowlands

Area of ecoregion km ² (mi ²)	Area of planning region km ² (mi ²)	Minimum Dynamic Reserve km ² (mi ²)	Number of protected area benchmarks	Number of new system-level benchmarks	Number of candidate benchmark networks (groups)
51,726 (19,971)	172,547 (66,620)	11,180 (4,317)	2	412	174 (16)

The identification of candidate benchmark networks is a three-step process. First, potential benchmarks are identified based on size, intactness, and hydrologic connectivity. Next, benchmarks are assembled into candidate networks that are representative of the planning region, where the number of benchmarks required to achieve representation may vary amongst planning regions (*e.g.*, ecoregions). Finally, if multiple benchmark network options exist, to assist with the selection process, the networks are ranked using additional criteria such as fundamental benchmark properties, climate change, and focal species, as done below.

Benchmark potential of existing protected areas and regions that support the construction of benchmarks

The planning region for ecoregion 29 is defined by the ecoregion and intersecting hydrologic units (HUC8). Prior to identifying new benchmarks, existing protected areas (PAs) were clipped to the planning region and evaluated for their potential to serve as system- and subsystem-level benchmarks for the ecoregion (Figure 1). System-level benchmarks are assemblages of intact catchments that are of sufficient size to capture large-scale processes and maintain habitats vulnerable to natural disturbance (*i.e.*, Minimum Dynamic Reserve or MDR). There are two levels of benchmark intactness, I and II, which denote a minimum catchment intactness of 100% and 80%, respectively. Subsystem-level benchmarks do not meet the size and/or intactness criteria for system-level benchmarks. For this study, subsystem benchmarks are no less than 80% MDR in size. Two potential PA system-level II benchmarks were identified in ecoregion 29 (Figure 1; Table 1). Both PA benchmarks had sufficient overlap with the ecoregion ($\geq 80\%$ MDR) to be included as explicit benchmarks in the design of benchmark networks. However, they do not achieve environmental representation. As such, new benchmarks were identified. Ecoregion 29 has high benchmark potential with benchmarks identified over 95% of the ecoregion (Figure 1), which includes areas with existing protection.

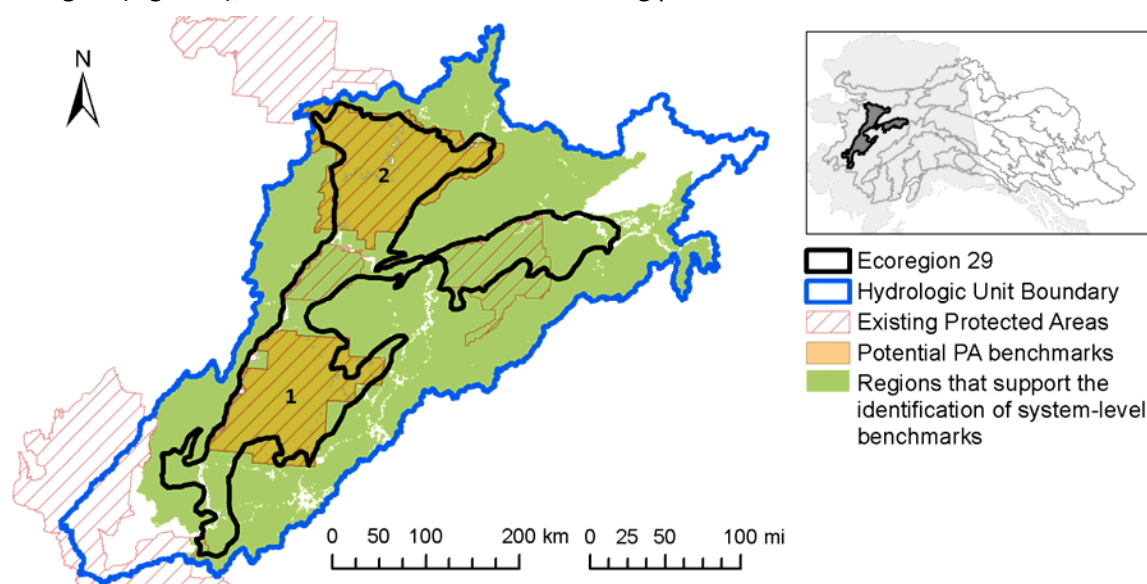


Figure 1: The planning region for ecoregion 29 is defined by the ecoregion (black outline) buffered by HUC8s (blue outline). Potential protected area (PA) system-level II benchmarks are shown in orange; labels correspond to the PA ID in Table 1. Regions that support the identification of new system-level benchmarks ($\geq 80\%$ catchment-intactness) are shown in green.

Table 1: Characteristics of two system-level II protected area (PA) benchmarks evaluated in ecoregion 29 (Figure 1). To be included in the design of benchmark networks, the ecoregion portion of PA benchmarks must be $\geq 80\%$ MDR in size.

PA ID	Area km ² (mi ²)	Benchmark Type	% MDR area intersecting ecoregion
PA_1	15,079 (5,822)	System-level II	118 (1.1 x MDR)
PA_2	17,839 (6,888)	System-level II	126 (1.2 x MDR)

Identification of candidate benchmark networks

Candidate benchmark networks for the planning region were identified based on the representation of four indicators of environmental variation: Climate Moisture Index (CMI), Gross Primary Productivity (GPP), Lake-Edge Density (LED), and Land Cover. Representation was assessed using MDR-based representation targets for indicator classes. Representation targets were derived for each class by multiplying the MDR for the ecoregion by the proportion of the class in the ecoregion. For example, if the class makes up 10% of the ecoregion, the target would be $0.1 \times \text{MDR}$. For a representation target to be achieved, it must be fully met within a single benchmark, except when benchmarks overlap. For ecoregion 29, we identified 8 benchmark networks, comprised of the two PA benchmarks (PA_1 & PA_2) plus one new system-level benchmark, that achieve all MDR-based representation targets. Only the ecoregion portions of PA_1 & PA_2 were needed to achieve representation and satisfy the size and intactness requirements of system-level benchmarks. As such, for those networks that include PA_1&2, only the ecoregion portions of PA_1 & PA_2 were used to assess fundamental benchmark properties and resilience to climate change. However, the full extents of PA_1 & PA_2 were used when evaluating the representation of focal species habitat. Networks were also identified from new benchmarks only. Networks designed from three new system-level benchmarks achieve all representation targets. In total, 174 candidate benchmark networks were identified and assigned to 16 spatial groups (Figure 2). For reporting, the set of candidate benchmark networks was reduced to the top network from each spatial group (N1-16; Figure 2, Table 2). Networks N1 to N6 include the PA benchmarks. The top networks were selected using the same criteria and methods as described below for ranking candidate benchmark networks. For a full description of the methods, see the [main report](#).

Table 2: Area and representation characteristics of the top networks selected from the 16 spatial groups in Figure 2. The networks differ in area due to variable overlap of benchmarks within networks. All networks achieved MDR-based representation targets for CMI, LED, GPP, and land cover, but representation varied amongst networks when evaluated using Kolmogorov-Smirnov (KS; continuous indicators CMI, LED, and GPP) and Bray-Curtis (BC; categorical indicator land cover) dissimilarity metrics (DMs). DMs range from 0 to 1, with values closer to 0 indicating better representation.

Network ID	Area km ² (mi ²)	Upstream area km ² (mi ²)	KS & BC Dissimilarity Metrics				
			CMI	GPP	LED	Land Cover	Mean Dissimilarity
N1	38,438 (14,841)	118,457 (45,736)	0.074	0.020	0.179	0.057	0.082
N2	38,444 (14,843)	118,451 (45,734)	0.078	0.037	0.152	0.048	0.079
N3	38,447 (14,844)	118,448 (45,733)	0.048	0.040	0.135	0.047	0.068
N4	38,439 (14,841)	118,497 (45,752)	0.055	0.020	0.125	0.068	0.067
N5	38,447 (14,844)	118,475 (45,743)	0.054	0.038	0.167	0.087	0.086
N6	38,447 (14,845)	118,448 (45,733)	0.083	0.071	0.164	0.111	0.107
N7	32,882 (12,696)	10,298 (3,976)	0.161	0.035	0.323	0.218	0.184
N8	31,813 (12,283)	63,042 (24,341)	0.113	0.160	0.284	0.161	0.180
N9	32,913 (12,708)	10,472 (4,043)	0.069	0.140	0.339	0.172	0.180
N10	30,580 (11,807)	24,406 (9,423)	0.158	0.020	0.283	0.202	0.166
N11	28,742 (11,097)	34,238 (13,219)	0.187	0.065	0.228	0.164	0.161
N12	33,483 (12,928)	21,575 (8,330)	0.154	0.043	0.317	0.212	0.182
N13	30,599 (11,814)	52,131 (20,128)	0.182	0.196	0.312	0.184	0.218
N14	29,287 (11,308)	19,640 (7,583)	0.122	0.115	0.307	0.161	0.176
N15	32,912 (12,707)	26,113 (10,082)	0.034	0.165	0.286	0.153	0.160
N16	31,011 (11,973)	36,682 (14,163)	0.160	0.091	0.328	0.198	0.194

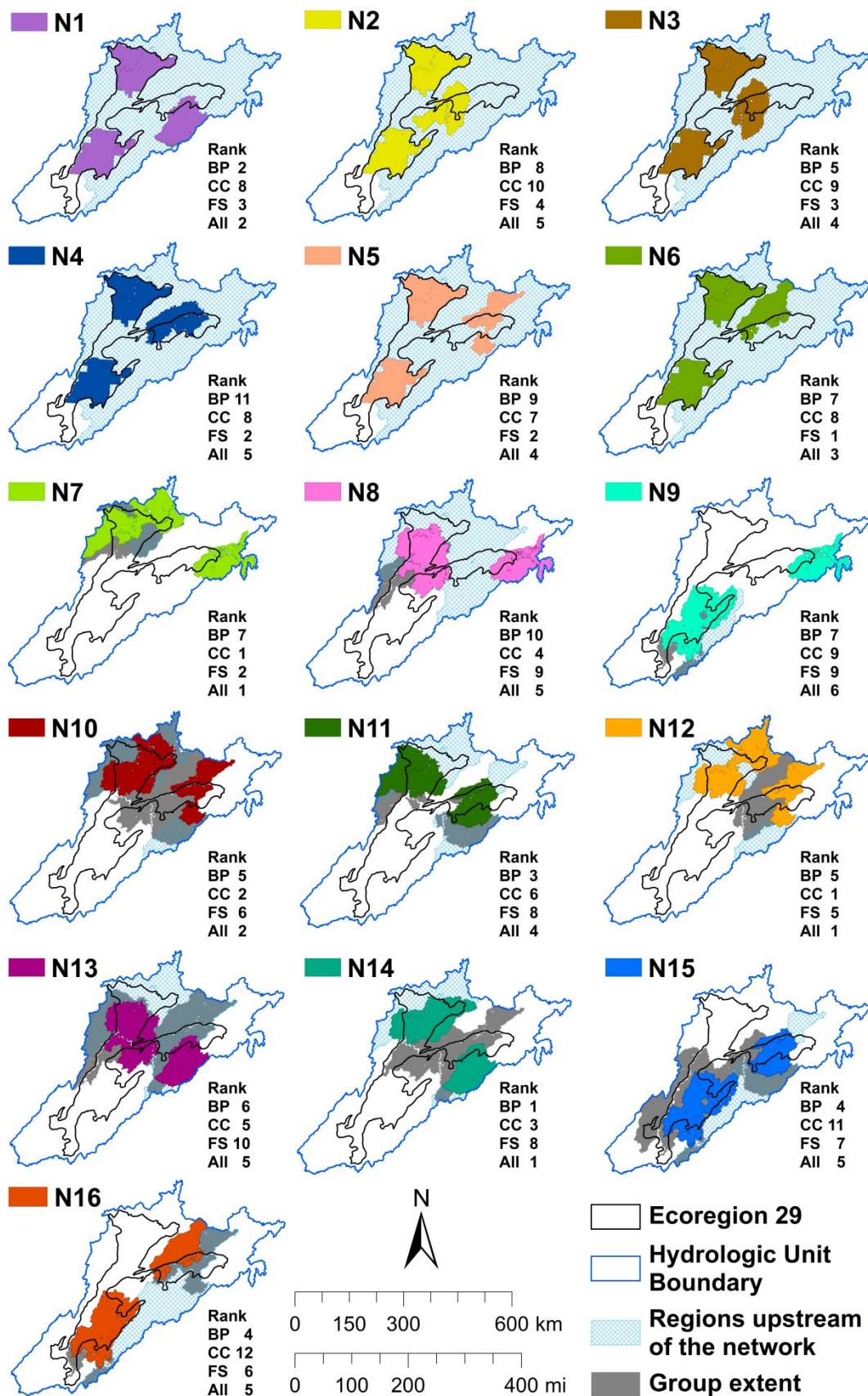


Figure 2: Benchmark networks for ecoregion 29 (N=174) were assigned to 16 spatial groups. The top network selected from each group is shown in color. Networks N1 to N6 include the system-level PA benchmark (PA_1&2); only the ecoregion portions of PA_1&2 are shown. Networks N7 to N16 are comprised of three system-level benchmarks, with two overlapping benchmarks in the network. Catchments upstream of networks are shown in blue cross-hatching. The group extent (grey) is the area covered by all networks in the group. Ranks based on fundamental benchmark properties (BP), resilience to climate change (CC), amount of focal species habitat (FS), and overall rank (ALL) are reported (Tables 3-6).

Benchmark network ranking

Candidate benchmark networks were ranked using three sets of criteria: fundamental benchmark properties (Table 3), resilience to climate change (Table 4), and the amount of focal species habitat (Table 5). Ranks were determined using weighted-rank methods as described in the [main report](#). The ranks across the three sets of criteria were combined to provide an overall rank (Table 6). The results for all benchmark networks (N=174) are available at www.beaconsproject.ca/nwb.

Fundamental Benchmark Properties

In addition to being large and intact, benchmarks are designed to have high internal hydrologic connectivity (*e.g.*, DCI), minimal vulnerability to external and internal disturbances (*e.g.*, Upstream Area), and a compact shape (*e.g.*, Shape Index), and selected to be representative of environmental variation. The 16 candidate networks vary with regards to these properties. While all benchmark networks satisfy MDR-based representation targets, representation varies widely when measured using dissimilarity metrics (DMs). Mean Dissimilarity ranges from 0.067 to 0.213, with higher values indicating greater dissimilarity and poorer representation (Tables 2 & 3). Networks including PA benchmarks (N1-N6) have moderate to high representation across the four indicators of environmental variation with $DM < 0.2$, and seven of the remaining 10 networks (N7-N16) have moderate to high representation across three of the four indicators (Table 2). Networks differ widely in the amount of upstream area (10,298 – 118,497 km²), although in all cases the upstream area is largely intact (92-99%; Table 3). Networks differ with regards to shape, but have similar internal vulnerability as well as internal hydrologic connectivity with minimum DCI ranging from 0.039 to 0.211 (Table 3), with values closer to 1 indicating greater connectivity.

Table 3: Benchmark networks were ranked using a suite of benchmark properties. **Mean Dissimilarity** is the mean dissimilarity metric for the four indicators of environmental variation, and ranges from 0 to 1, with values closer to 0 indicating better representation, and ranking higher. **Upstream Area** is a measure of vulnerability to external influences via the stream network; lower values rank higher. **Upstream AWI** is the mean area-weighted intactness of catchments upstream of the network; higher values rank higher. **Internal Vulnerability** is the proportion of low (<80%) intact areas within the network; lower values rank higher. **Maximum Shape** is the shape index for the benchmark in the network that most deviates from a circle (shape index = 1); lower values rank higher. **Minimum lwDCI** is the mean length-weighted Dendritic Connectivity Index (0-1; low to high connectivity) for the benchmark with the lowest internal hydrologic connectivity in the network; higher values rank higher. **Benchmark Properties Rank** is based on the network-level mean weighted rank across all properties, shown in (). The highest ranked network within each individual benchmark property is highlighted in grey. All metrics are described in the [main report](#). **Overlapping benchmarks within a network were treated as a single benchmark which calculating Shape and lwDCI.**

Network ID	Mean Dissimilarity	Upstream Area km ² (mi ²)	Upstream AWI (%)	Internal Vulnerability	Maximum Shape	Minimum lwDCI	Benchmark Properties Rank
N1	0.082	118,457 (45,736)	97	0.006	3.0	0.164	2 (0.068)
N2	0.079	118,451 (45,734)	97	0.014	4.3	0.164	8 (0.059)
N3	0.068	118,448 (45,733)	97	0.019	3.9	0.164	5 (0.062)
N4	0.067	118,497 (45,752)	97	0.018	5.1	0.039	11 (0.055)
N5	0.086	118,475 (45,743)	97	0.012	4.5	0.119	9 (0.058)
N6	0.107	118,448 (45,733)	97	0.013	4.1	0.164	7 (0.060)
N7	0.184	10,298 (3,976)	95	0.028	5.2	0.142	7 (0.060)
N8	0.180	63,042 (24,341)	98	0.029	5.2	0.143	10 (0.057)
N9	0.180	10,472 (4,043)	92	0.035	5.2	0.164	7 (0.060)
N10	0.166	24,406 (9,423)	99	0.026	4.6	0.110	5 (0.062)
N11	0.161	34,238 (13,219)	98	0.011	3.8	0.211	3 (0.066)
N12	0.182	21,575 (8,330)	98	0.020	4.5	0.119	5 (0.062)
N13	0.218	52,131 (20,128)	98	0.016	4.3	0.143	6 (0.061)
N14	0.176	19,640 (7,583)	99	0.009	3.2	0.211	1 (0.071)
N15	0.160	26,113 (10,082)	97	0.028	3.9	0.184	4 (0.065)
N16	0.194	36,682 (14,163)	97	0.017	4.1	0.381	4 (0.065)

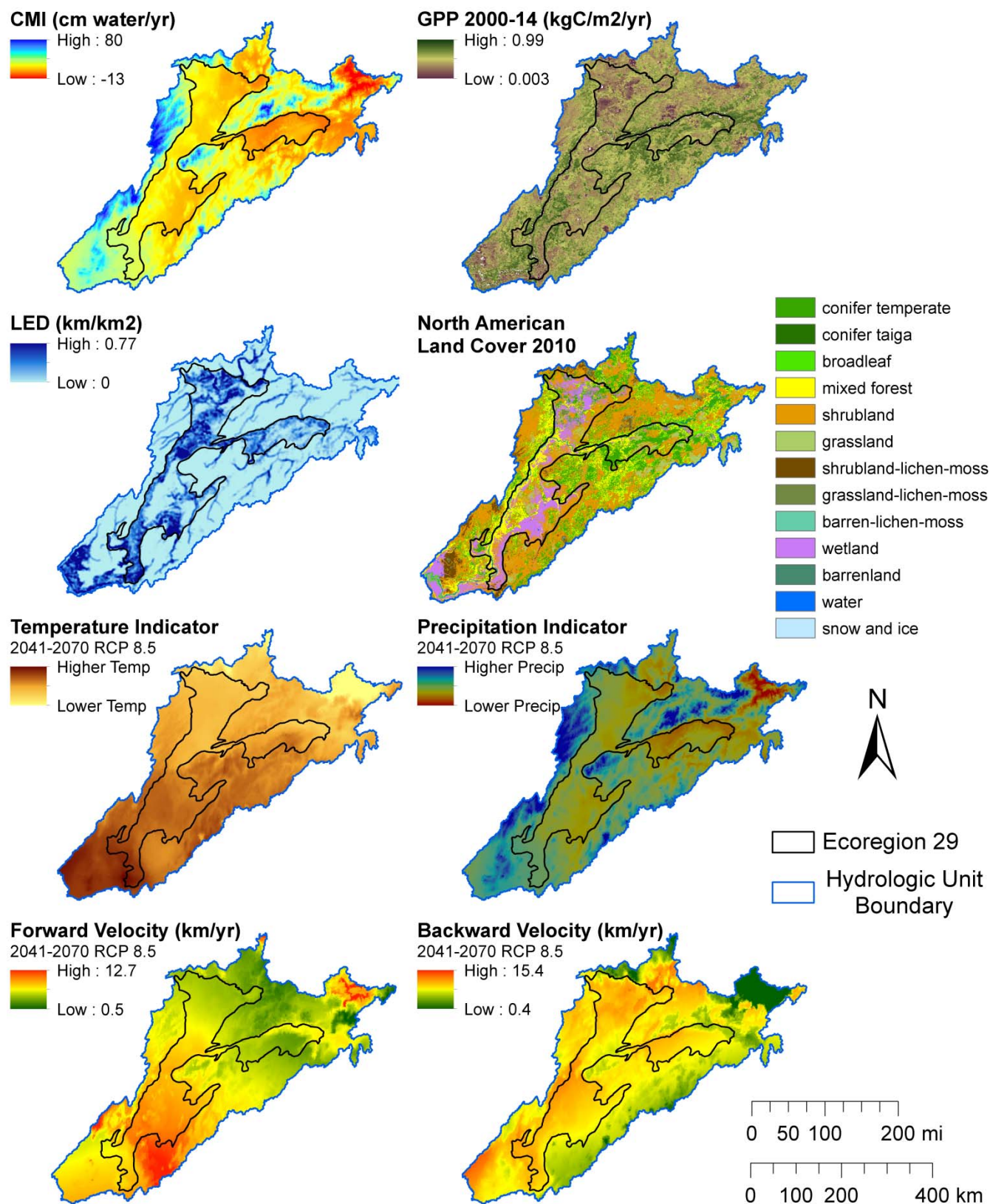


Figure 3: Distribution of the four indicators of environmental variation and four climate change datasets in the ecoregion, which include Climate Moisture Index (CMI, [Wang et al. 2016](#)), Gross Primary Productivity 2000-14 (GPP, [BEACONS 2015](#)), Lake-Edge Density (LED, [BEACONS 2015](#)), and North American Land Cover 2010 ([CEC 2013](#)), and the climate-projected datasets: Temperature and Precipitation Indicators, and Forward and Backward Velocity ([AdaptWest Project 2015](#)).

Climate Change Resilience

Changes in patterns of environmental variation are expected under climate change. To address this, we ranked benchmark networks based on their ability to maintain representation, as measured by dissimilarity metrics (DM), using climate-projected multivariate indicators of climatic conditions (2041-2070, RCP 8.5¹; Figure 3), which we refer to as Temperature and Precipitation Indicators given the explanatory power of temperature and precipitation variables in each indicator, respectively. Only the networks including PA benchmarks (N1-N6) maintain representation with moderate to high values for both indicators (DM < 0.2; Table 4). Five of the ten remaining networks have one indicator with moderate to good representation. To address the vulnerability of benchmark networks and their support of biodiversity under climate change, we evaluated the ability of species to persist within, and colonize, benchmark networks, using forward and backward climate velocity (2041-2070, RCP 8.5)¹, respectively. Higher velocities indicate greater vulnerability to species loss. Across networks, mean forward and backward velocities range from 3.4 to 5.3 km/yr and 6.3 to 7.1 km/yr, respectively (Table 4). Most networks have a mean forward and backward velocity lower than the ecoregion-level means of 4.8 km/yr and 7.0 km/yr; however, within all networks, forward velocity is 2-3 km/yr lower than backward velocity, suggesting the networks favour refugia potential over colonization potential. The output is available such that users have the flexibility to select a subset of climate datasets to rank networks.

Table 4: Benchmark networks were ranked based on their capacity to represent future climatic conditions (temperature and precipitation indicators) and vulnerability to changing climatic conditions (forward and backward velocity). **Temperature and Precipitation Indicators** were assessed using the Kolmogorov-Smirnov (KS) dissimilarity metric, which ranges from 0 to 1; lower values indicate better representation, and rank higher. **Climate Velocities** are calculated as the geometric mean across all benchmarks from each network; lower values rank higher. **Climate Change Rank** is based on the network-level mean weighted rank across the four climatic measures, shown in (). The highest ranked network within each indicator/velocity is highlighted in grey. For dataset details, see the [main report](#).

Network ID	KS Dissimilarity Metrics		Mean Forward Climate Velocity km/yr (mi/yr)	Mean Backward Climate Velocity km/yr (mi/yr)	Climate Change Rank
	Temperature Indicator	Precipitation Indicator			
N1	0.137	0.073	4.6 (2.9)	6.7 (4.2)	8 (0.060)
N2	0.080	0.062	4.7 (2.9)	7.1 (4.4)	10 (0.058)
N3	0.080	0.042	4.6 (2.9)	7.1 (4.4)	9 (0.059)
N4	0.083	0.074	4.5 (2.8)	7.0 (4.4)	8 (0.060)
N5	0.122	0.080	4.5 (2.8)	6.8 (4.2)	7 (0.061)
N6	0.124	0.120	4.3 (2.7)	7.1 (4.4)	8 (0.060)
N7	0.433	0.214	3.4 (2.1)	6.5 (4.0)	1 (0.070)
N8	0.315	0.167	4.1 (2.5)	6.4 (4.0)	4 (0.065)
N9	0.263	0.060	5.3 (3.3)	6.3 (3.9)	9 (0.059)
N10	0.376	0.213	3.6 (2.2)	6.5 (4.0)	2 (0.068)
N11	0.310	0.228	3.9 (2.4)	6.9 (4.3)	6 (0.062)
N12	0.385	0.225	3.4 (2.1)	6.4 (4.0)	1 (0.070)
N13	0.188	0.241	4.2 (2.6)	6.4 (4.0)	5 (0.064)
N14	0.249	0.181	3.8 (2.3)	6.6 (4.1)	3 (0.066)
N15	0.405	0.051	5.3 (3.3)	6.6 (4.1)	11 (0.056)
N16	0.313	0.186	5.0 (3.1)	6.8 (4.2)	12 (0.055)

¹ All climate-projected datasets used to rank networks were for the period 2041-2070 and were created using RCP 8.5, the Representative Concentration Pathway with the highest greenhouse gas emissions from [IPCC \(2014\)](#). Additional rankings based on 2011-2040 and 2071-2100 and RCP 4.5 are available at www.beaconsproject.ca/nwb.

Focal Species

An extensive review of management plans for the NWB LCC did not reveal specific conservation targets for focal species (see [focal species report](#)). As such, the objective for all focal species was to maximize the protection of current and future habitat when ranking benchmark networks. For some species, there are multiple datasets (N=2-15). When multiple datasets were used, the network rank for each species (or guild) is a mean of the weighted ranks generated for each dataset. Within each network, ranks vary across species, with a tendency towards lower variability in the higher ranked networks (Table 5a). **For this evaluation, Networks N1-N6 include the full extent of the PA benchmarks PA_1&2 (Figure 1), not just the ecoregion portions.** The top ranks of the protected area benchmark networks N1-N6 are likely due to network size, which ranges from 1.3-1.5 times larger than that of the other networks (N7-16). The output is available such that users have the flexibility to select a subset of species datasets to rank networks.

Table 5a: Benchmark networks were ranked based on the amount of focal species habitat they capture. Data were not available for Broad Whitefish. Values in () are weighted ranks. When multiple datasets were used for a species (e.g., Caribou N=5), networks were ranked using the mean of weighted ranks from across datasets. The highest ranked network within each individual species is highlighted in grey. **Focal Species Rank** is based on the network-level mean weighted rank across all species. For further details on the datasets and methods see [main and focal species reports](#). Additional information on each focal species and their datasets is available at www.beaconsproject.ca/nwb.

Network ID	Area km ² (mi ²)	Rank (mean weighted rank)									Focal Species Rank
		Beaver (N=1)	Caribou (N=5)	Chinook Salmon (N=3)	Chum Salmon (N=3)	Dall Sheep (N=1)	Moose (N=2)	Old-Forest Birds (N=15) ¹	Rusty Blackbird (N=3)	Waterfowl (N=3) ²	
N1	44,100 (17,027)	5 (0.076)	5 (0.066)	6 (0.062)	5 (0.066)	6 (0.058)	2 (0.072)	8 (0.061)	12 (0.058)	3 (0.075)	3 (0.066)
N2	44,106 (17,029)	4 (0.077)	4 (0.067)	8 (0.060)	3 (0.069)	6 (0.058)	5 (0.065)	9 (0.060)	10 (0.062)	3 (0.075)	4 (0.065)
N3	44,109 (17,030)	2 (0.079)	3 (0.068)	6 (0.062)	2 (0.070)	6 (0.058)	4 (0.067)	10 (0.059)	11 (0.061)	2 (0.076)	3 (0.066)
N4	44,101 (17,027)	1 (0.081)	2 (0.070)	8 (0.060)	3 (0.069)	6 (0.058)	3 (0.069)	8 (0.061)	9 (0.063)	1 (0.077)	2 (0.067)
N5	44,109 (17,030)	3 (0.078)	2 (0.070)	7 (0.061)	4 (0.067)	6 (0.058)	2 (0.072)	7 (0.063)	7 (0.065)	2 (0.076)	2 (0.067)
N6	44,097 (17,026)	5 (0.076)	1 (0.074)	1 (0.071)	1 (0.071)	6 (0.058)	1 (0.080)	7 (0.063)	7 (0.065)	4 (0.074)	1 (0.070)
N7	32,882 (12,696)	8 (0.054)	6 (0.062)	4 (0.066)	7 (0.059)	1 (0.086)	6 (0.064)	3 (0.077)	1 (0.086)	9 (0.050)	2 (0.067)
N8	31,813 (12,283)	7 (0.055)	8 (0.055)	10 (0.056)	11 (0.049)	4 (0.063)	12 (0.054)	3 (0.077)	3 (0.075)	8 (0.051)	9 (0.059)
N9	32,913 (12,708)	6 (0.056)	11 (0.048)	11 (0.052)	4 (0.067)	3 (0.065)	14 (0.051)	6 (0.068)	6 (0.067)	6 (0.065)	9 (0.059)
N10	33,510 (12,938)	9 (0.053)	5 (0.066)	5 (0.063)	8 (0.056)	6 (0.058)	8 (0.059)	2 (0.078)	2 (0.082)	9 (0.050)	6 (0.062)
N11	28,744 (11,098)	10 (0.052)	7 (0.061)	6 (0.062)	10 (0.050)	5 (0.059)	10 (0.058)	3 (0.077)	4 (0.073)	9 (0.050)	8 (0.060)
N12	33,483 (12,928)	9 (0.053)	4 (0.067)	2 (0.069)	6 (0.060)	6 (0.058)	7 (0.062)	1 (0.079)	1 (0.086)	9 (0.050)	5 (0.064)
N13	32,058 (12,378)	12 (0.049)	8 (0.055)	9 (0.059)	12 (0.048)	6 (0.058)	13 (0.053)	2 (0.078)	5 (0.070)	10 (0.048)	10 (0.057)
N14	29,287 (11,308)	11 (0.050)	7 (0.061)	4 (0.066)	9 (0.051)	6 (0.058)	9 (0.059)	4 (0.075)	4 (0.073)	10 (0.048)	8 (0.060)
N15	32,912 (12,707)	6 (0.056)	10 (0.049)	10 (0.056)	3 (0.069)	2 (0.076)	15 (0.050)	6 (0.068)	8 (0.064)	5 (0.066)	7 (0.061)
N16	31,011 (11,973)	12 (0.049)	9 (0.053)	3 (0.068)	1 (0.071)	3 (0.065)	11 (0.057)	5 (0.072)	6 (0.067)	7 (0.061)	6 (0.062)

¹ Guild composed of Boreal Chickadee, Brown Creeper, Pine Grosbeak, Swainson's Thrush, and White-Winged Crossbill. In this case, the weighted rank shown in parenthesis is the mean across 15 datasets (3 per species).

² Guild composed of Lesser Scaup (1 dataset), White-Winged Scoter (1 dataset), and Trumpeter Swan (1 dataset). The weighted rank shown in parenthesis is the mean across all species.

To remove the influence of the large networks N1-N6 on the weighted rank values, the ranking process with focal species was repeated with N1-N6 excluded (Table 5b). The relative ranks of networks N7-N16 may differ from Table 5a, as differences masked by the large networks N1-N3 are revealed.

Table 5b. Benchmark networks designed from **new system-level benchmarks only** were ranked based on the amount of focal species habitat they capture. Values in () are weighted ranks. When multiple datasets were used for a species (*e.g.*, Caribou N=5), networks were ranked using the mean of weighted ranks from across datasets. The highest ranked network within each individual species is highlighted in grey. **Focal Species Rank** is based on the network-level mean weighted rank across all species. For further details on the datasets and methods see [main and focal species reports](#). Additional information on each focal species and their datasets is available at www.beaconsproject.ca/nwb.

Network ID	Rank (mean weighted rank)									Focal Species Rank
	Beaver (N=1)	Caribou (N=5)	Chinook Salmon (N=3)	Chum Salmon (N=3)	Dall Sheep (N=1)	Moose (N=2)	Old-Forest Birds (N=15) ¹	Rusty Blackbird (N=3)	Waterfowl (N=3) ²	
N7	4 (0.105)	3 (0.107)	3 (0.105)	5 (0.099)	2 (0.117)	1 (0.119)	3 (0.102)	1 (0.118)	5 (0.090)	2 (0.106)
N8	3 (0.117)	5 (0.093)	7 (0.089)	9 (0.080)	3 (0.101)	5 (0.096)	2 (0.103)	3 (0.102)	4 (0.092)	7 (0.097)
N9	2 (0.121)	7 (0.083)	8 (0.085)	3 (0.113)	3 (0.101)	7 (0.088)	7 (0.091)	6 (0.089)	2 (0.129)	5 (0.100)
N10	5 (0.100)	2 (0.114)	4 (0.101)	6 (0.098)	4 (0.097)	2 (0.106)	2 (0.103)	2 (0.112)	6 (0.089)	3 (0.102)
N11	6 (0.093)	4 (0.103)	5 (0.100)	8 (0.086)	6 (0.089)	4 (0.098)	4 (0.101)	4 (0.097)	7 (0.088)	8 (0.095)
N12	5 (0.100)	1 (0.117)	1 (0.110)	4 (0.105)	1 (0.133)	1 (0.119)	1 (0.104)	1 (0.118)	6 (0.089)	1 (0.110)
N13	8 (0.076)	5 (0.093)	6 (0.094)	9 (0.080)	6 (0.089)	8 (0.087)	1 (0.104)	5 (0.093)	8 (0.085)	10 (0.089)
N14	7 (0.083)	4 (0.103)	2 (0.106)	7 (0.087)	5 (0.091)	3 (0.101)	5 (0.099)	4 (0.097)	9 (0.084)	9 (0.094)
N15	1 (0.125)	6 (0.087)	6 (0.094)	2 (0.122)	6 (0.089)	9 (0.086)	7 (0.091)	8 (0.084)	1 (0.132)	4 (0.101)
N16	8 (0.076)	5 (0.093)	1 (0.110)	1 (0.125)	6 (0.089)	6 (0.095)	6 (0.096)	7 (0.088)	3 (0.118)	6 (0.098)

¹ Guild composed of Boreal Chickadee, Brown Creeper, Pine Grosbeak, Swainson's Thrush, and White-Winged Crossbill. In this case, the weighted rank shown in parenthesis is the mean across 15 datasets (3 per species).

² Guild composed of Lesser Scaup (1 dataset), White-Winged Scoter (1 dataset), and Trumpeter Swan (1 dataset). The weighted rank shown in parenthesis is the mean across all species.

Overall Rank

Candidate benchmark networks were assigned an overall rank based on fundamental benchmark properties (Table 3), resilience to climate change (Table 4) and the amount of focal species habitat (Table 5a). Attributes were given equal weighting. However, users may wish to prioritize some attributes over others. The results are available in a format that gives users the flexibility to modify and re-rank networks. Additional attributes can also be considered. For example, if the conservation priority is the protection of focal species habitat within the ecoregion, networks with greater overlap with the ecoregion are more likely to achieve this objective. Greater overlap with protected areas may facilitate implementation, given existing protection. Overlap with the ecoregion and existing protected areas ranges from 31-86% and 31-82% across benchmark networks, respectively (Table 6). While benchmark networks that most overlap with the ecoregion may best reflect the environmental variation of the ecoregion, networks that extend beyond the ecoregion boundary may contribute to the benchmark networks of neighbouring ecoregions, leading to greater efficiency in the design of a protected areas network for the NWBLCC planning region.

Table 6: Overall Rank is a network-level mean weighted rank for fundamental benchmark properties (Table 3), climate change (Table 4) and focal species (Table 5a). Values in () are weighted ranks. **Overlap with ecoregion** and **Overlap with existing PAs** with high levels of protection may be used as additional ranking criteria.

Network ID	Overlap with Ecoregion	Overlap with Existing PAs	Mean Dissimilarity	Benchmark Properties Rank	Climate Change Rank	Focal Species Rank ¹	Overall Rank
N1	74.4%	81.9%	0.082	2 (0.068)	8 (0.060)	3 (0.066)	2 (0.064)
N2	78.2%	76.6%	0.079	8 (0.059)	10 (0.058)	4 (0.065)	5 (0.060)
N3	79.6%	79.7%	0.068	5 (0.062)	9 (0.059)	3 (0.066)	4 (0.062)
N4	86.1%	82.2%	0.067	11 (0.055)	8 (0.060)	2 (0.067)	5 (0.060)
N5	78.9%	78.5%	0.086	9 (0.058)	7 (0.061)	2 (0.067)	4 (0.062)
N6	76.6%	76.0%	0.107	7 (0.060)	8 (0.060)	1 (0.070)	3 (0.063)
N7	31.4%	31.6%	0.184	7 (0.060)	1 (0.070)	2 (0.067)	1 (0.065)
N8	40.5%	30.9%	0.180	10 (0.057)	4 (0.065)	9 (0.059)	5 (0.060)
N9	45.9%	39.1%	0.180	7 (0.060)	9 (0.059)	9 (0.059)	6 (0.059)
N10	46.0%	50.9%	0.166	5 (0.062)	2 (0.068)	6 (0.062)	2 (0.064)
N11	54.6%	63.6%	0.161	3 (0.066)	6 (0.062)	8 (0.060)	4 (0.062)
N12	37.5%	41.5%	0.182	5 (0.062)	1 (0.070)	5 (0.064)	1 (0.065)
N13	37.7%	43.6%	0.218	6 (0.061)	5 (0.064)	10 (0.057)	5 (0.060)
N14	42.0%	57.9%	0.176	1 (0.071)	3 (0.066)	8 (0.060)	1 (0.065)
N15	57.0%	59.7%	0.160	4 (0.065)	11 (0.056)	7 (0.061)	5 (0.060)
N16	50.4%	48.7%	0.194	4 (0.065)	12 (0.055)	6 (0.062)	5 (0.060)

¹ Focal Species Rank is from Table 5a.