

Ecoregion 18 – Kobuk Ridges and Valleys

Area of ecoregion km ² (mi ²)	Area of planning region km ² (mi ²)	Minimum Dynamic Reserve km ² (mi ²)	Number of protected area benchmarks	Number of new system-level benchmarks	Number of candidate benchmark networks (groups)
55,136 (21,288)	140,502 (54,248)	7,217 (2,786)	1	523	48 (13)

The identification of candidate benchmark networks is a three-step process. First, potential benchmarks are identified based on size, intactness, and hydrologic connectivity. Next, benchmarks are assembled into candidate networks that are representative of the planning region, where the number of benchmarks required to achieve representation may vary amongst planning regions (*e.g.*, ecoregions). Finally, if multiple benchmark network options exist, to assist with the selection process, the networks are ranked using additional criteria such as fundamental benchmark properties, climate change, and focal species, as done below.

Benchmark potential of existing protected areas and regions that support the construction of benchmarks

The planning region for ecoregion 18 is defined by the ecoregion and intersecting hydrologic units (HUC8). Prior to identifying new benchmarks, existing protected areas (PAs) were clipped to the planning region and evaluated for their potential to serve as system- and subsystem-level benchmarks for the ecoregion (Figure 1). System-level benchmarks are assemblages of intact catchments that are of sufficient size to capture large-scale processes and maintain habitats vulnerable to natural disturbance (*i.e.*, Minimum Dynamic Reserve or MDR). There are two levels of benchmark intactness, I and II, which denote a minimum catchment intactness of 100% and 80%, respectively. Subsystem-level benchmarks do not meet the size and/or intactness criteria for system-level benchmarks. For this study, subsystem benchmarks are no less than 80% MDR in size. Four potential PA system-level II benchmarks were identified in ecoregion 18 (Figure 1, Table 1). Only one PA benchmark (PA_2) had sufficient overlap with the ecoregion ($\geq 80\%$ MDR) to be included in the design of benchmark networks. This PA benchmark does not achieve environmental representation, and new benchmarks were identified. Ecoregion 18 has high benchmark potential with benchmarks identified over 96% of the ecoregion (Figure 1), which includes areas with existing protection.

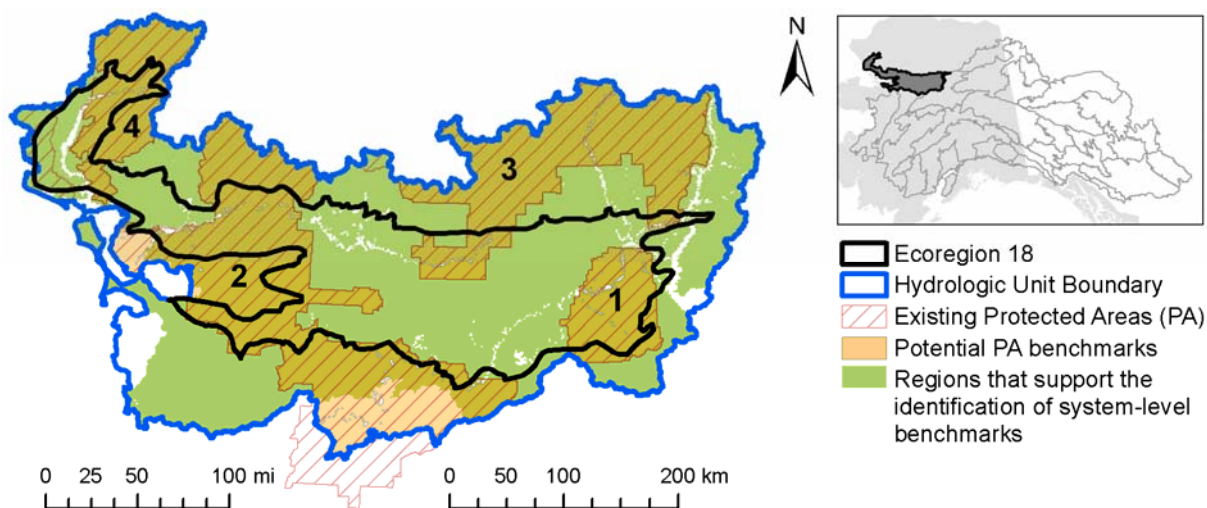


Figure 1: The planning region for ecoregion 18 is defined by the ecoregion (black outline) buffered by HUC8s (blue outline). Potential protected area (PA) system-level II benchmarks are shown in orange; labels correspond to the PA ID in Table 1. Regions that support the identification of new system-level benchmarks ($\geq 80\%$ catchment-intactness) are shown in green.

Table 1: Characteristics of four system-level II protected area (PA) benchmarks evaluated in ecoregion 18 (Figure 1). To be included in the design of benchmark networks, the ecoregion portion of PA benchmarks must be $\geq 80\%$ MDR in size.

PA ID	Area km ² (mi ²)	Benchmark Type	% MDR area intersecting ecoregion
PA_1	6,436 (2,485)	System-level II	72
PA_2	32,650 (12,606)	System-level II	149 (1.4 x MDR)
PA_3	19,544 (7,546)	System-level II	36
PA_4	8,879 (3,428)	System-level II	41

Identification of candidate benchmark networks

Candidate benchmark networks for the planning region were identified based on the representation of four indicators of environmental variation: Climate Moisture Index (CMI), Gross Primary Productivity (GPP), Lake-Edge Density (LED), and Land Cover (Figures 3 & 4). Representation was assessed using MDR-based representation targets for indicator classes. Representation targets were derived for each class by multiplying the MDR for the ecoregion by the proportion of the class in the ecoregion. For example, if the class makes up 10% of the ecoregion, the target would be $0.1 \times \text{MDR}$. For a representation target to be achieved, it must be fully met within a single benchmark, except when benchmarks overlap. For ecoregion 18, we identified 25 representative system-level benchmark networks comprised of the existing protected area benchmark (PA_2) and one new system-level benchmark. Only the ecoregion portion of the PA_2 is needed to achieve representation and satisfy the size and intactness requirements of a system-level benchmark. As such, for networks that include PA_2, only the ecoregion portion of PA_2 was used to assess benchmark properties and resilience to climate change (*e.g.*, N1-11, Figure 3). However, the full extent of PA_2 was used when evaluating the representation of focal species habitat. Networks designed from two new system-level benchmarks achieve all representation targets, except for one of two GPP classes (10 and 13); for these networks, 86-93% of the under-represented GPP class can be met, and catchments neighbouring the networks can be added to complete the representation of these classes (Figure 2). In total, 48 candidate benchmark networks were identified and assigned to 13 spatial groups (Table 2, Figure 3). For reporting, the set of candidate benchmark networks was reduced to the top network from each spatial group (N1-N13; Table 2, Figure 3). The top networks were selected using the same criteria and methods as described below for ranking candidate benchmark networks. For a full description of methods, see the [main report](#).

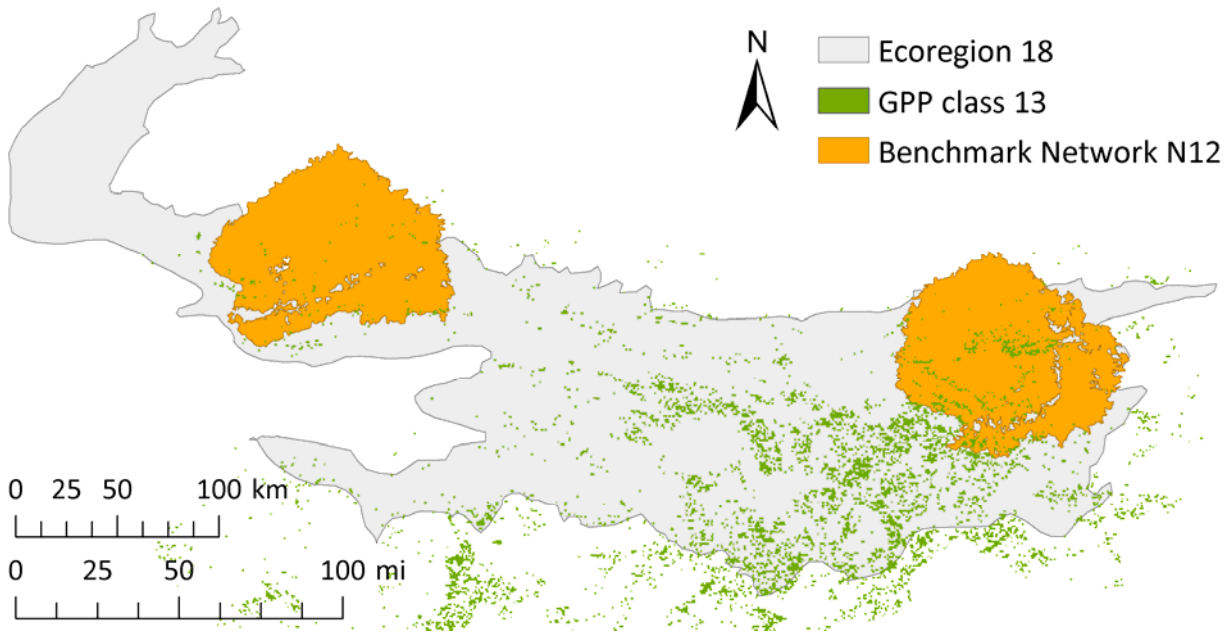


Figure 2. Benchmark network N12 has met 90% of the target for GPP class 13 (436 km²), and requires an additional 43 km² to complete the representation of these indicator classes. GPP class 13 lies near the network, and catchments adjacent to the eastern benchmark can be added to complete representation.

Table 2: Area and representation characteristics of the top networks selected from the 13 spatial groups in Figure 2. Networks N1 to N11 include the protected area benchmark (PA_2) clipped to the ecoregion. Networks differ in area due to variable overlap of benchmarks within networks. All networks, except N12 and N13, achieve all MDR-based representation targets for CMI, LED, GPP, and land cover. N12 and N13 achieve 90 and 86% of the representation target for GPP class 13, respectively. Representation varies amongst networks when evaluated using Kolmogorov-Smirnov (KS; continuous indicators CMI, LED, and GPP) and Bray-Curtis (BC; categorical indicator land cover) dissimilarity metrics (DMs). DMs range from 0 to 1, with values closer to 0 indicating better representation.

Network ID	Area km ² (mi ²)	Upstream area km ² (mi ²)	KS & BC Dissimilarity Metrics				
			CMI	GPP	LED	Land Cover	Mean Dissimilarity
N1	18,210 (7,031)	82,015 (31,666)	0.078	0.154	0.062	0.047	0.085
N2	17,841 (6,888)	82,382 (31,808)	0.071	0.135	0.031	0.056	0.073
N3	18,235 (7,040)	81,991 (31,657)	0.107	0.095	0.036	0.093	0.083
N4	17,642 (6,811)	84,405 (32,589)	0.079	0.111	0.054	0.075	0.080
N5	18,243 (7,044)	81,983 (31,654)	0.128	0.083	0.047	0.114	0.093
N6	18,228 (7,038)	81,996 (31,659)	0.058	0.151	0.042	0.059	0.078
N7	18,232 (7,039)	81,993 (31,657)	0.077	0.113	0.019	0.068	0.069
N8	18,234 (7,040)	81,991 (31,657)	0.043	0.145	0.036	0.061	0.071
N9	18,228 (7,038)	81,997 (31,659)	0.039	0.128	0.032	0.040	0.060
N10	18,237 (7,041)	81,988 (31,656)	0.038	0.108	0.044	0.056	0.062
N11	18,229 (7,038)	81,996 (31,659)	0.043	0.075	0.042	0.066	0.056
N12	14,436 (5,574)	51,186 (19,763)	0.042	0.074	0.057	0.084	0.064
N13	14,436 (5,574)	51,738 (19,976)	0.069	0.113	0.073	0.076	0.083

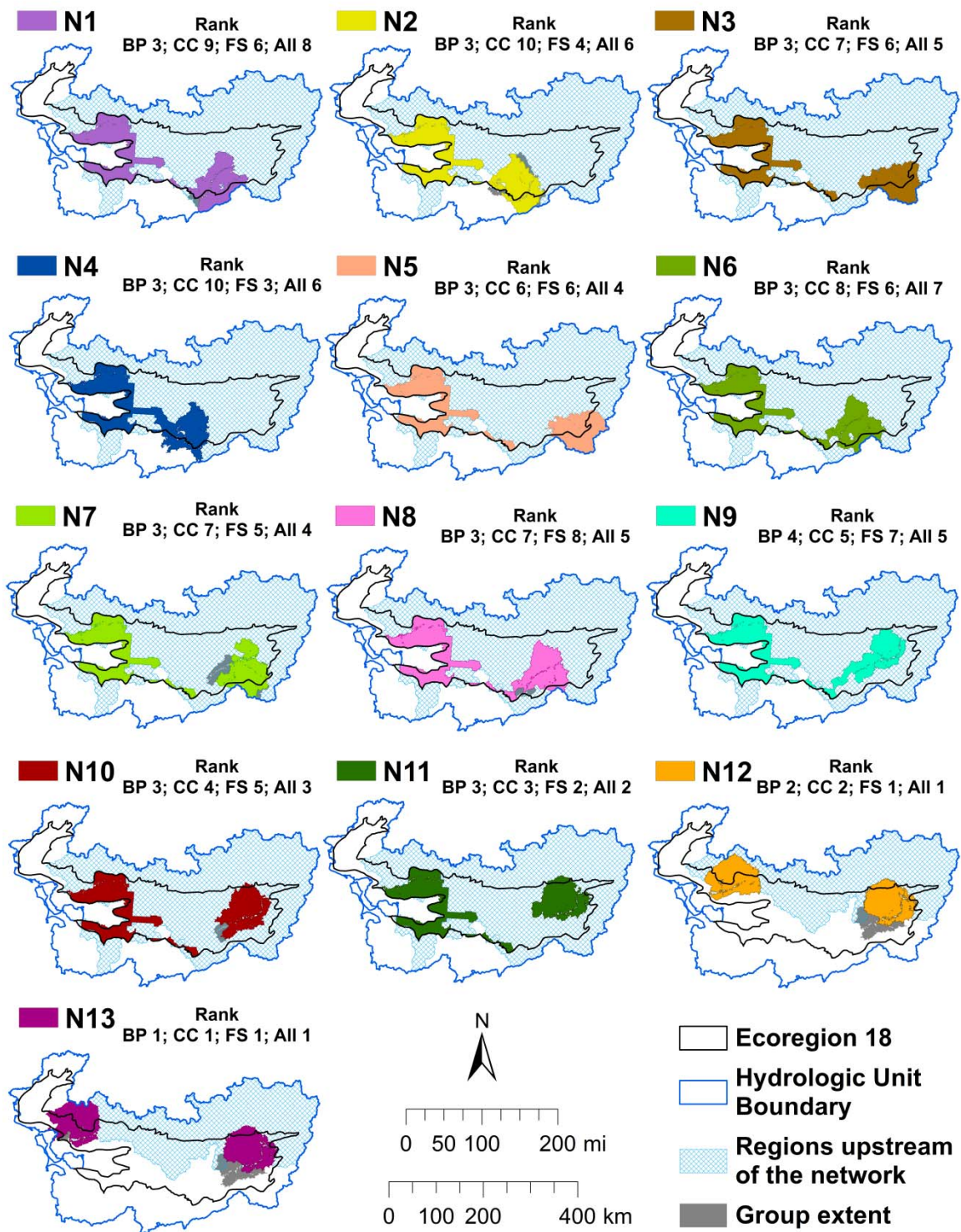


Figure 3: Benchmark networks for ecoregion 18 (N=48) were assigned to 13 spatial groups. The top network selected from each group is shown in color. Networks N1-11 are comprised of one PA system-level II benchmark PA_2 and one new system-level benchmark; only the ecoregion portion of PA_2 is required to meet the size, intactness, and representation requirements of a system-level benchmark network, as shown here. Networks N12 and N13 are comprised of two new system-level II benchmarks that meet all representation targets except for one GPP class, either class 10 or 13. Catchments upstream of networks are shown in blue cross-hatching. The group extent (grey) is the area covered by all networks in the group. Ranks based on fundamental benchmark properties (BP), resilience to climate change (CC), amount of focal species habitat (FS), and overall rank (ALL) are reported (Tables 3-6).

Benchmark network ranking

Candidate benchmark networks were ranked using three sets of criteria: fundamental benchmark properties (Table 3), resilience to climate change (Table 4), and the amount of focal species habitat (Table 5). Ranks were determined using weighted-rank methods as described in the [main report](#). The ranks across the three sets of criteria were combined to provide an overall rank (Table 6). The results for all benchmark networks (N=48) are available at www.beaconsproject.ca/nwb.

Fundamental Benchmark Properties

In addition to being large and intact, benchmarks are designed to have high internal hydrologic connectivity (e.g., DCI), minimal vulnerability to external and internal disturbances (e.g., Upstream Area), and a compact shape (e.g., Shape Index), and selected to be representative of environmental variation. The 13 candidate networks vary with regards to these properties. All benchmark networks satisfy MDR-based representation targets, with similar representation when measured using dissimilarity metrics (DMs). Mean Dissimilarity ranges from 0.056 to 0.093, with higher values indicating greater dissimilarity and poorer representation (Tables 2 & 3). All 13 networks have moderate to high representation with DM < 0.2 across the four indicators of environmental variation (Table 2). Networks differ widely in the amount of upstream area (51,186 – 81,997 km²), although in all cases the upstream area is largely intact (98%; Table 3). Networks are similar with regards to internal vulnerability and shape. All networks have low internal hydrologic connectivity with minimum lwDCI ranging from 0.066 to 0.102 (Table 3), with values closer to 1 indicating greater connectivity.

Table 3: Benchmark networks were ranked using a suite of benchmark properties. **Mean Dissimilarity** is the mean dissimilarity metric for the four indicators of environmental variation, and ranges from 0 to 1, with values closer to 0 indicating better representation, and ranking higher. **Upstream Area** is a measure of vulnerability to external influences via the stream network; lower values rank higher. **Upstream AWI** is the mean area-weighted intactness of catchments upstream of the network; higher values rank higher. **Internal Vulnerability** is the proportion of low (<80%) intact areas within the network; lower values rank higher. **Maximum Shape** is the shape index for the benchmark in the network that most deviates from a circle (shape index = 1); lower values rank higher. **Minimum lwDCI** is the mean length-weighted Dendritic Connectivity Index (0-1; low to high connectivity) for the benchmark with the lowest internal hydrologic connectivity in the network; higher values rank higher. **Benchmark Properties Rank** is based on the network-level mean weighted rank across all properties, shown in (). The highest ranked network within each individual benchmark property is highlighted in grey. All metrics are described in the [main report](#).

Network ID	Mean Dissimilarity	Upstream Area km ² (mi ²)	Upstream AWI (%)	Internal Vulnerability	Maximum Shape	Minimum lwDCI	Benchmark Properties Rank
N1	0.085	82,015 (31,666)	98	0.017	4.9	0.066	3 (0.075)
N2	0.073	82,382 (31,808)	98	0.019	4.9	0.102	3 (0.075)
N3	0.083	81,991 (31,657)	98	0.006	4.9	0.102	3 (0.075)
N4	0.080	84,405 (32,589)	98	0.019	4.9	0.102	3 (0.075)
N5	0.093	81,983 (31,654)	98	0.005	4.9	0.102	3 (0.075)
N6	0.078	81,996 (31,659)	98	0.017	4.9	0.073	3 (0.075)
N7	0.069	81,993 (31,657)	98	0.011	4.9	0.102	3 (0.075)
N8	0.071	81,991 (31,657)	98	0.010	4.9	0.102	3 (0.075)
N9	0.060	81,997 (31,659)	98	0.017	5.0	0.070	4 (0.074)
N10	0.062	81,988 (31,656)	98	0.016	4.9	0.086	3 (0.075)
N11	0.056	81,996 (31,659)	98	0.015	4.9	0.102	3 (0.075)
N12	0.064	51,186 (19,763)	98	0.029	4.6	0.101	2 (0.084)
N13	0.083	51,738 (19,976)	98	0.032	4.5	0.101	1 (0.085)

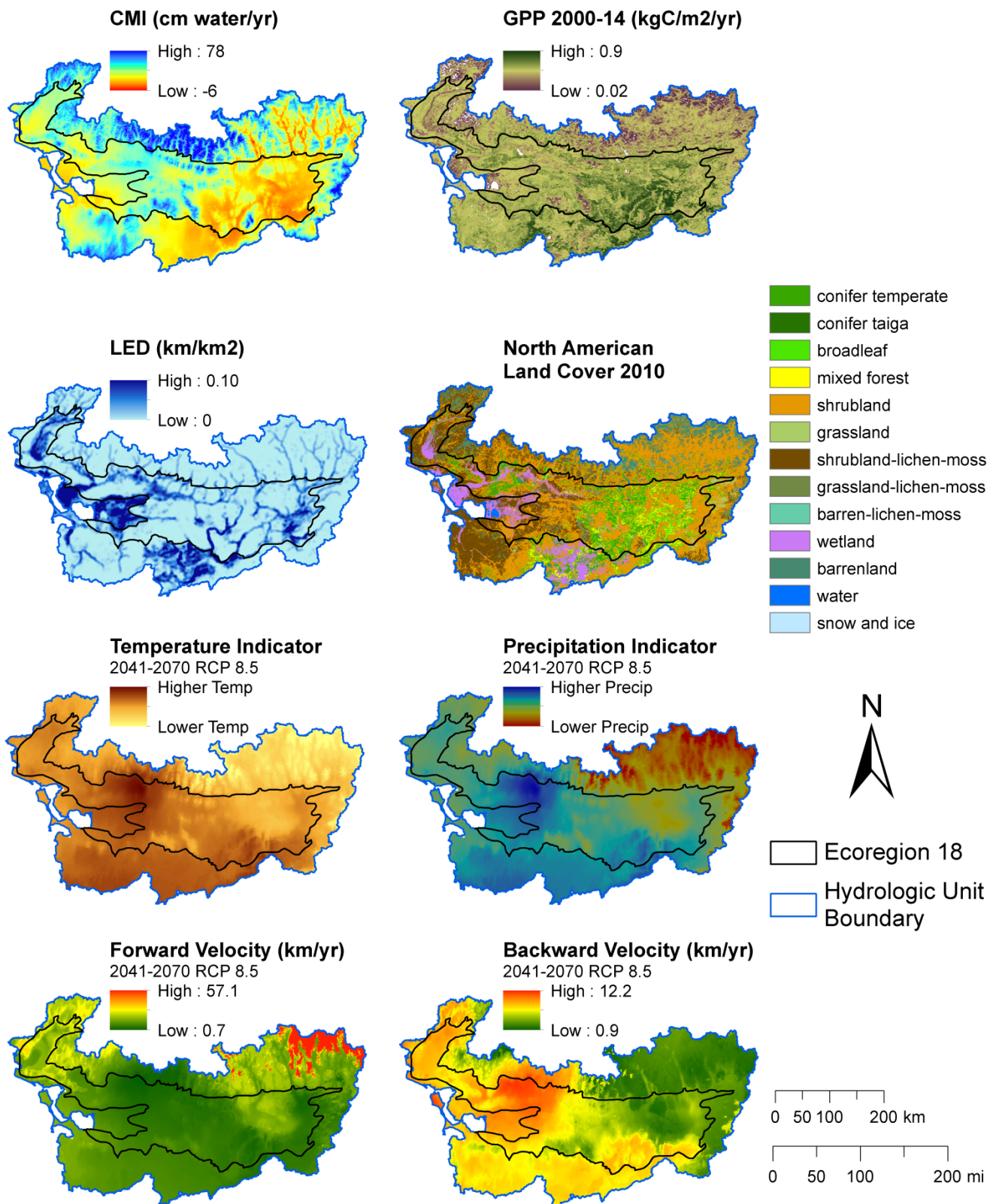


Figure 4: Distribution of the four indicators of environmental variation and four climate change datasets in the ecoregion, which include Climate Moisture Index (CMI, [Wang et al. 2016](#)), Gross Primary Productivity 2000-14 (GPP, [BEACONS 2015](#)), Lake-Edge Density (LED, [BEACONS 2015](#)), and North American Land Cover 2010 ([CEC 2013](#)), and the climate-projected datasets: Temperature and Precipitation Indicators, and Forward and Backward Velocity ([AdaptWest Project 2015](#)).

Climate Change Resilience

Changes in patterns of environmental variation are expected under climate change. To address this, we ranked benchmark networks based on their ability to maintain representation, as measured by dissimilarity metrics (DM), using climate-projected multivariate indicators of climatic conditions (2041-2070, RCP 8.5¹; Figure 4), which we refer to as Temperature and Precipitation Indicators given the explanatory power of temperature and precipitation variables in each indicator, respectively. Only two networks (N10 and N11) maintain representation with moderate to high values for both indicators (DM < 0.2; Table 4). The remaining networks have one indicator with moderate to good representation. To address the vulnerability of benchmark networks and their support of biodiversity under climate change, we evaluated the ability of species to persist within, and colonize, benchmark networks, using forward and backward climate velocity (2041-2070, RCP 8.5¹; Figure 4) respectively. Higher velocities indicate greater vulnerability to species loss. Across networks, mean forward and backward velocities range from 2.6 to 5.2 km/yr and 4.3 to 7.9 km/yr, respectively (Table 4). Lower forward velocities indicate higher refugia potential for species, whereas lower backward velocities indicate higher colonization potential. In all networks (except N13), forward velocity is 2-5 km/yr lower than backward velocity. All networks (except N12 and N13) have mean forward velocities equal to or lower than the ecoregion-level mean (3.3 km/yr), whereas only four of 13 networks have mean backward velocities lower than the ecoregion-level mean (5.8 km/yr). This suggests that networks identified for ecoregion 18 favour refugia potential over colonization potential. The output is available such that users have the flexibility to select a subset of climate datasets to rank networks.

Table 4: Benchmark networks were ranked based on their capacity to represent future climatic conditions (temperature and precipitation indicators) and vulnerability to changing climatic conditions (forward and backward velocity). **Temperature and Precipitation Indicators** were assessed using the Kolmogorov-Smirnov (KS) dissimilarity metric, which ranges from 0 to 1; lower values indicate better representation, and rank higher. **Climate Velocities** are calculated as the geometric mean across all benchmarks from each network; lower values rank higher. **Climate Change Rank** is based on the network-level mean weighted rank across the four climatic measures, shown in (). The highest ranked network within each indicator/velocity is highlighted in grey. For dataset details, see the [main report](#).

Network ID	KS Dissimilarity Metrics		Mean Forward Climate Velocity km/yr (mi/yr)	Mean Backward Climate Velocity km/yr (mi/yr)	Climate Change Rank
	Temperature Indicator	Precipitation Indicator			
N1	0.494	0.116	2.6 (1.6)	7.8 (4.9)	9 (0.069)
N2	0.479	0.090	2.7 (1.7)	7.9 (4.9)	10 (0.068)
N3	0.344	0.144	2.6 (1.6)	7.0 (4.4)	7 (0.073)
N4	0.439	0.096	2.8 (1.7)	7.7 (4.8)	10 (0.068)
N5	0.302	0.174	2.7 (1.7)	6.7 (4.1)	6 (0.075)
N6	0.428	0.092	2.7 (1.7)	7.4 (4.6)	8 (0.071)
N7	0.34	0.075	2.8 (1.8)	6.8 (4.2)	7 (0.073)
N8	0.355	0.064	2.9 (1.8)	6.7 (4.2)	7 (0.073)
N9	0.265	0.066	3.1 (1.9)	6.1 (3.8)	5 (0.078)
N10	0.192	0.054	3.3 (2.0)	5.6 (3.5)	4 (0.082)
N11	0.176	0.064	3.3 (2.1)	5.5 (3.4)	3 (0.083)
N12	0.247	0.043	4.1 (2.5)	4.7 (2.9)	2 (0.090)
N13	0.380	0.082	5.2 (3.2)	4.3 (2.7)	1 (0.092)

¹ All climate-projected datasets used to rank networks were for the period 2041-2070 and were created using RCP 8.5, the Representative Concentration Pathway with the highest greenhouse gas emissions from [IPCC \(2014\)](#). Additional rankings based on 2011-2040 and 2071-2100 and RCP 4.5 are available at www.beaconsproject.ca/nwb.

Focal Species

An extensive review of management plans for the NWBLCC did not reveal specific conservation targets for focal species (see [focal species report](#)). As such, the objective for all focal species was to maximize the protection of current and future habitat when ranking benchmark networks. For some species, there are multiple datasets (N=2-15). When multiple datasets were used, the network rank for the species (or guild) is a mean of the weighted ranks generated for each dataset. **For this evaluation, Networks N1-11 include the full extent of the PA benchmark PA_2 (Figure 1), not just the ecoregion portion.** Within each network, ranks vary across species (Table 5a). The top ranks of the benchmark networks that include the PA system-level benchmark PA_2 (N1-11) are likely due to network size, which ranges from 2.5 to 2.7 times larger than that of the two networks identified from new system-level benchmarks only (N12-13). To remove the influence of the large networks N1-N11 on the weighted rank values, the ranking process with focal species was repeated with N1-N11 excluded (Table 5b). The relative ranks of networks N4-N20 may differ from Table 5a, as differences masked by the large networks N1-N3 are revealed. The output is available such that users have the flexibility to select a subset of species datasets to rank networks.

Table 5a: Benchmark networks were ranked based on the amount of focal species habitat they capture. Values in () are weighted ranks. When multiple datasets were used for a species (*e.g.*, Caribou N=6), networks were ranked using the mean of weighted ranks from across datasets. The highest ranked network within each individual species is highlighted in grey. **Focal Species Rank** is based on the network-level mean weighted rank across all species. For further details on the datasets and methods see [main and focal species reports](#). Additional information on each focal species and their datasets is available at www.beaconsproject.ca/nwb.

Network ID	Area km ² (mi ²)	Rank (mean weighted rank)										Focal Species Rank
		Beaver (N=1)	Broad Whitefish (N=1)	Caribou (N=6)	Chinook Salmon (N=3)	Chum Salmon (N=4)	Dall Sheep (N=2)	Moose (N=2)	Old-Forest Birds (N=15) ¹	Rusty Blackbird (N=3)	Waterfowl (N=3) ²	
N1	38,581 (14,896)	6 (0.077)	1 (0.081)	3 (0.079)	2 (0.081)	9 (0.072)	7 (0.069)	6 (0.076)	4 (0.083)	6 (0.076)	10 (0.072)	6 (0.076)
N2	37,807 (14,597)	1 (0.085)	1 (0.081)	1 (0.083)	3 (0.080)	2 (0.088)	6 (0.070)	5 (0.078)	8 (0.076)	5 (0.077)	7 (0.080)	4 (0.079)
N3	39,873 (15,395)	4 (0.079)	1 (0.081)	7 (0.074)	9 (0.068)	12 (0.062)	10 (0.066)	2 (0.090)	3 (0.085)	4 (0.078)	3 (0.084)	6 (0.076)
N4	37,412 (14,445)	1 (0.085)	1 (0.081)	1 (0.083)	4 (0.077)	1 (0.093)	5 (0.071)	8 (0.074)	10 (0.074)	4 (0.078)	2 (0.087)	3 (0.080)
N5	39,882 (15,398)	4 (0.079)	1 (0.081)	7 (0.074)	9 (0.068)	13 (0.061)	10 (0.066)	1 (0.094)	6 (0.081)	3 (0.079)	4 (0.083)	6 (0.076)
N6	39,752 (15,348)	7 (0.076)	1 (0.081)	6 (0.076)	1 (0.084)	8 (0.073)	8 (0.068)	7 (0.075)	5 (0.082)	7 (0.075)	9 (0.073)	6 (0.076)
N7	39,871 (15,394)	1 (0.085)	1 (0.081)	8 (0.072)	6 (0.074)	11 (0.070)	9 (0.067)	3 (0.082)	6 (0.081)	8 (0.074)	1 (0.089)	5 (0.077)
N8	39,873 (15,395)	7 (0.076)	1 (0.081)	5 (0.077)	8 (0.070)	10 (0.071)	9 (0.067)	7 (0.075)	7 (0.079)	8 (0.074)	9 (0.073)	8 (0.074)
N9	39,867 (15,393)	5 (0.078)	1 (0.081)	3 (0.079)	7 (0.072)	7 (0.075)	5 (0.071)	7 (0.075)	9 (0.075)	7 (0.075)	8 (0.077)	7 (0.075)
N10	39,876 (15,396)	2 (0.084)	1 (0.081)	4 (0.078)	5 (0.075)	6 (0.078)	4 (0.076)	5 (0.078)	11 (0.072)	7 (0.075)	5 (0.082)	5 (0.077)
N11	39,868 (15,393)	3 (0.083)	1 (0.081)	2 (0.080)	3 (0.080)	5 (0.081)	2 (0.100)	4 (0.081)	12 (0.071)	6 (0.076)	6 (0.081)	2 (0.081)
N12	14,436 (5,574)	8 (0.055)	3 (0.049)	10 (0.069)	1 (0.084)	3 (0.087)	1 (0.103)	9 (0.058)	2 (0.211)	2 (0.216)	11 (0.057)	1 (0.098)
N13	14,436 (5,574)	9 (0.052)	2 (0.055)	9 (0.071)	2 (0.081)	4 (0.083)	3 (0.099)	10 (0.057)	1 (0.212)	1 (0.221)	12 (0.055)	1 (0.098)

¹ Guild composed of Boreal Chickadee, Brown Creeper, Pine Grosbeak, Swainson's Thrush, and White-Winged Crossbill. In this case, the weighted rank shown in parenthesis is the mean across 15 datasets (3 per species).

² Guild composed of Lesser Scaup (1 dataset), White-Winged Scoter (1 dataset), and Trumpeter Swan (1 dataset). The weighted rank shown in parenthesis is the mean across all species.

Table 5b. Benchmark networks designed from **new system-level benchmarks only** were ranked based on the amount of focal species habitat they capture. Values in () are weighted ranks. When multiple datasets were used for a species (e.g., Caribou N=6), networks were ranked using the mean of weighted ranks from across datasets. The highest ranked network within each individual species is highlighted in grey. **Focal Species Rank** is based on the network-level mean weighted rank across all species. For further details on the datasets and methods see [main and focal species reports](#). Additional information on each focal species and their datasets is available at www.beaconsproject.ca/nwb.

Network ID	Rank (mean weighted rank)										Focal Species Rank
	Beaver (N=1)	Broad Whitefish (N=1)	Caribou (N=6)	Chinook Salmon (N=3)	Chum Salmon (N=4)	Dall Sheep (N=2)	Moose (N=2)	Old-Forest Birds (N=15) ¹	Rusty Blackbird (N=3)	Waterfowl (N=3) ²	
N12	1 (0.622)	2 (0.377)	1 (0.540)	1 (0.500)	2 (0.459)	1 (0.622)	1 (0.622)	1 (0.532)	2 (0.498)	1 (0.622)	1 (0.511)
N13	2 (0.377)	1 (0.622)	2 (0.459)	1 (0.500)	1 (0.540)	2 (0.377)	2 (0.377)	2 (0.467)	1 (0.501)	2 (0.377)	2 (0.487)

¹ Guild composed of Boreal Chickadee, Brown Creeper, Pine Grosbeak, Swainson's Thrush, and White-Winged Crossbill. In this case, the weighted rank shown in parenthesis is the mean across 15 datasets (3 per species).

² Guild composed of Lesser Scaup (1 dataset), White-Winged Scoter (1 dataset), and Trumpeter Swan (1 dataset). The weighted rank shown in parenthesis is the mean across all species.

Overall Rank

Candidate benchmark networks were assigned an overall rank based on fundamental benchmark properties (Table 3), resilience to climate change (Table 4) and the amount of focal species habitat (Table 5a). Attributes were given equal weighting. However, users may wish to prioritize some attributes over others. The results are available in a format that gives users the flexibility to modify and re-rank networks. Additional attributes can also be considered. For example, if the conservation priority is the protection of focal species habitat within the ecoregion, networks with greater overlap with the ecoregion are more likely to achieve this objective. Greater overlap with protected areas may facilitate implementation, given existing protection. Overlap with the ecoregion and existing protected areas ranges from 67-98% and 8-85% across benchmark networks, respectively (Table 6). While benchmark networks that most overlap with the ecoregion may best reflect the environmental variation of the ecoregion, networks that extend beyond the ecoregion boundary may contribute to the benchmark networks of neighbouring ecoregions, leading to greater efficiency in the design of a protected areas network for the NWBLCC planning region.

Table 6: Overall Rank is a network-level mean weighted rank for fundamental benchmark properties (Table 3), climate change (Table 4) and focal species (Table 5a). Values in () are weighted ranks. **Overlap with ecoregion** and **Overlap with existing PAs** with high levels of protection may be used as additional ranking criteria.

Network ID	Overlap with Ecoregion	Overlap with Existing PAs	Mean Dissimilarity	Benchmark Properties Rank	Climate Change Rank	Focal Species Rank ¹	Overall Rank
N1	85.7%	85.7%	0.085	3 (0.075)	9 (0.069)	6 (0.076)	8 (0.071)
N2	88.0%	43.1%	0.073	3 (0.075)	10 (0.068)	4 (0.079)	6 (0.074)
N3	79.9%	26.6%	0.083	3 (0.075)	7 (0.073)	6 (0.076)	5 (0.075)
N4	87.4%	21.2%	0.080	3 (0.075)	10 (0.068)	3 (0.080)	6 (0.074)
N5	76.1%	15.2%	0.093	3 (0.075)	6 (0.075)	6 (0.076)	4 (0.076)
N6	92.1%	15.4%	0.078	3 (0.075)	8 (0.071)	6 (0.076)	7 (0.072)
N7	90.3%	12.9%	0.069	3 (0.075)	7 (0.073)	5 (0.077)	4 (0.076)
N8	96.5%	12.1%	0.071	3 (0.075)	7 (0.073)	8 (0.074)	5 (0.075)
N9	98.4%	10.9%	0.060	4 (0.074)	5 (0.078)	7 (0.075)	5 (0.075)
N10	97.8%	9.8%	0.062	3 (0.075)	4 (0.082)	5 (0.077)	3 (0.078)
N11	95.7%	8.7%	0.056	3 (0.075)	3 (0.083)	2 (0.081)	2 (0.081)
N12	71.4%	49.4%	0.064	2 (0.084)	2 (0.090)	1 (0.098)	1 (0.089)
N13	67.2%	30.0%	0.083	1 (0.085)	1 (0.092)	1 (0.098)	1 (0.089)

¹ Focal Species Rank is from Table 5a.